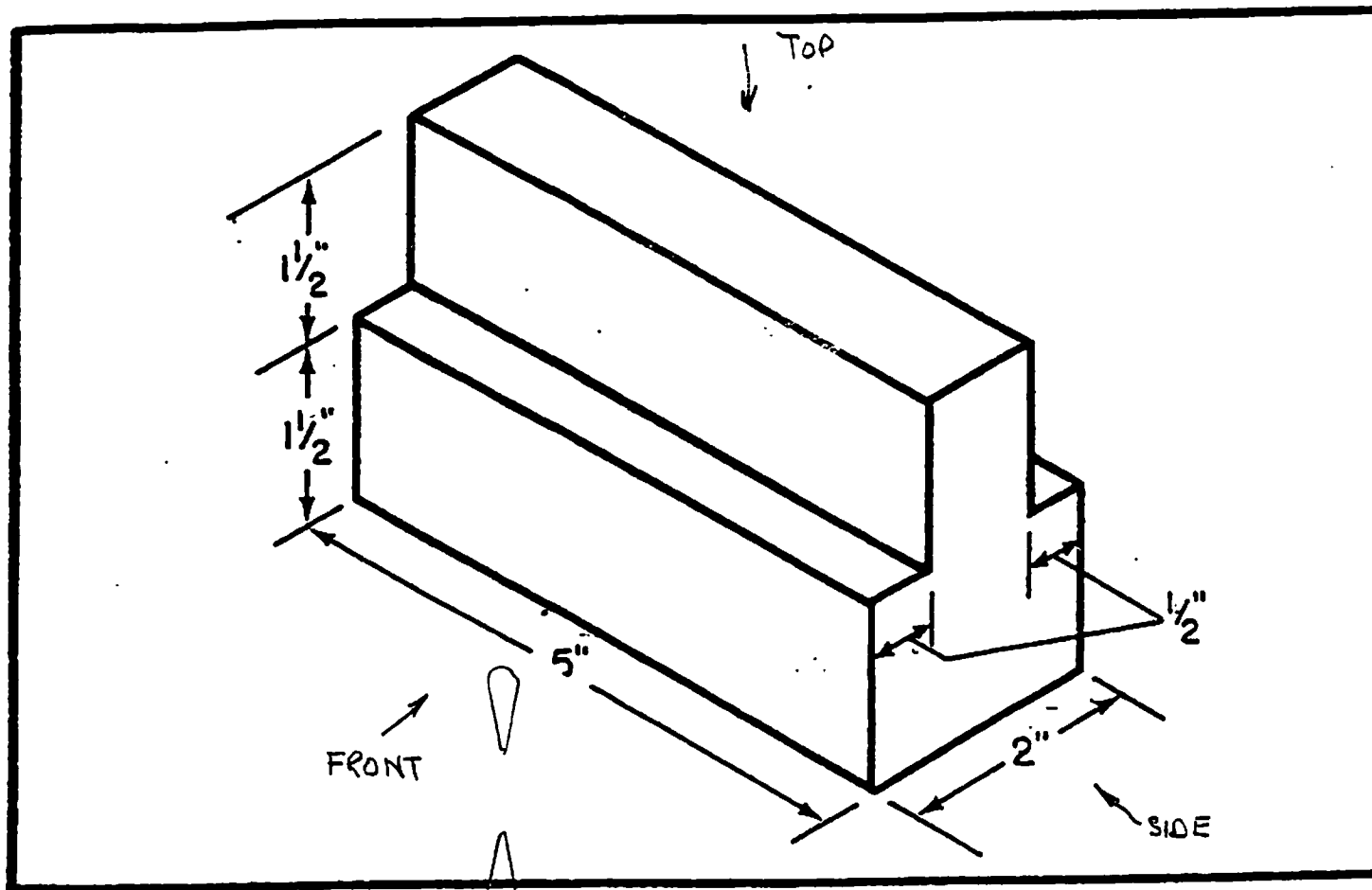


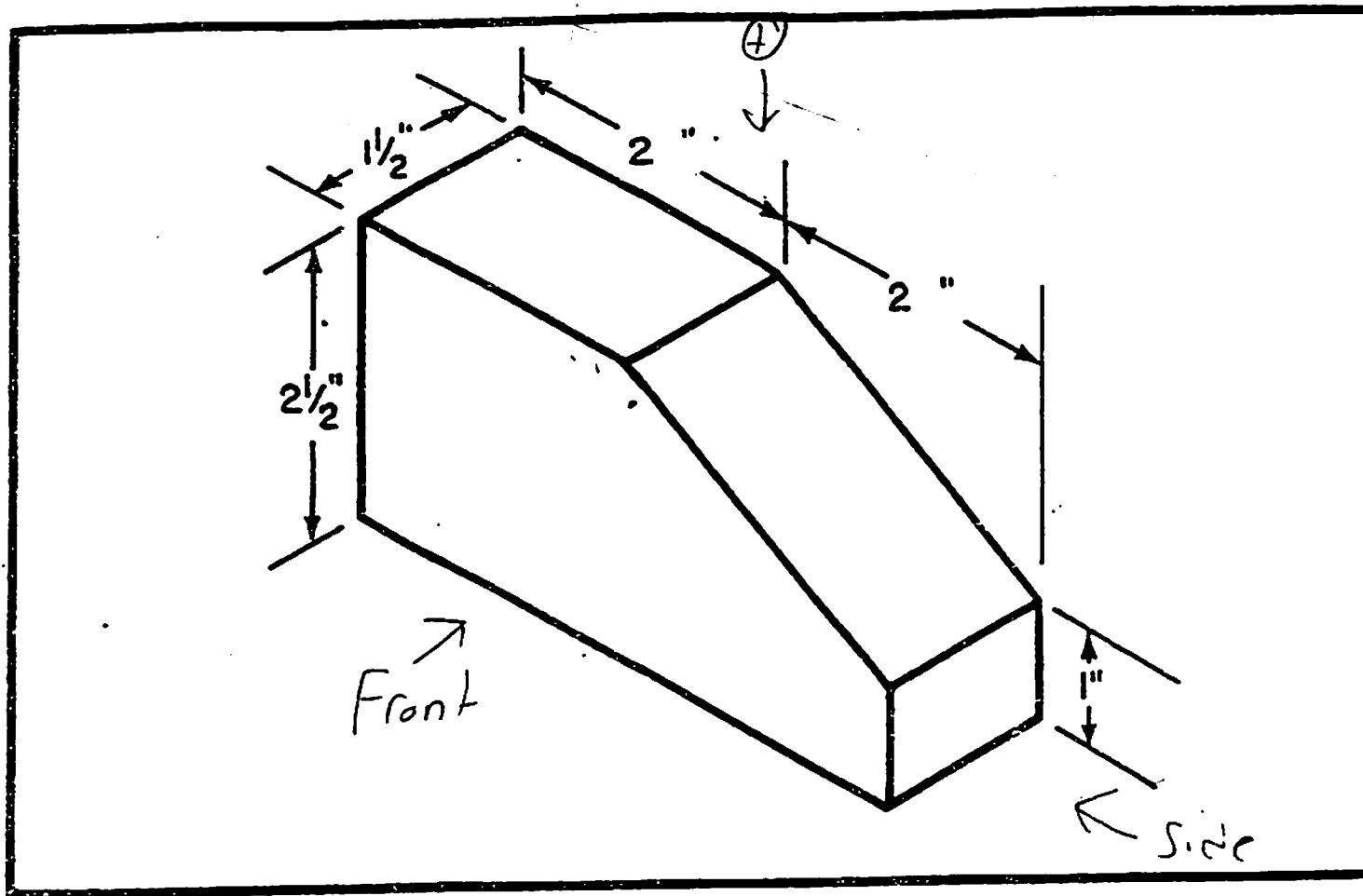
**Fig. 350 Cut-Off Holder (Layout A-3).\***



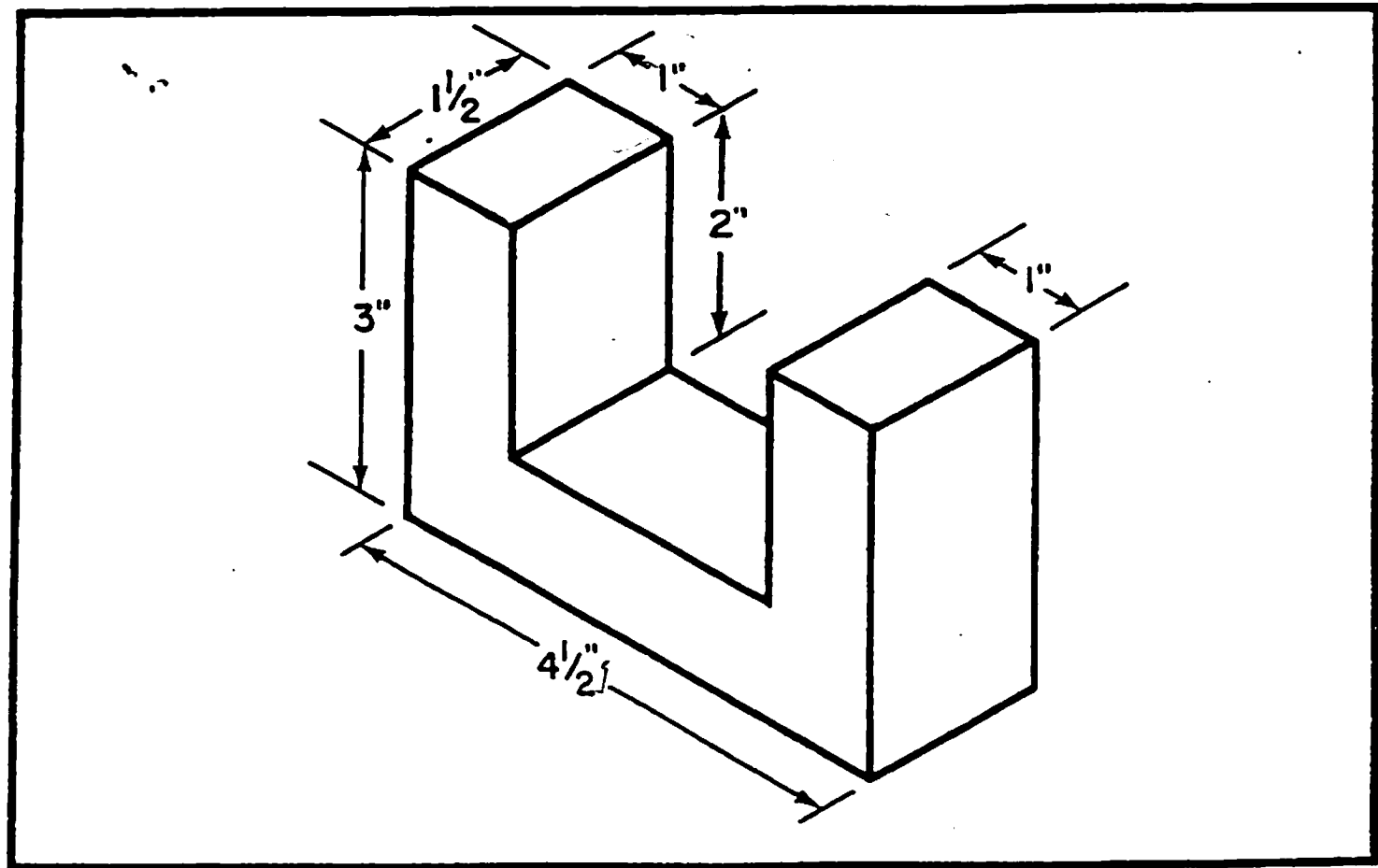
Double Rabbeted Block

DRAWING # 2

U o

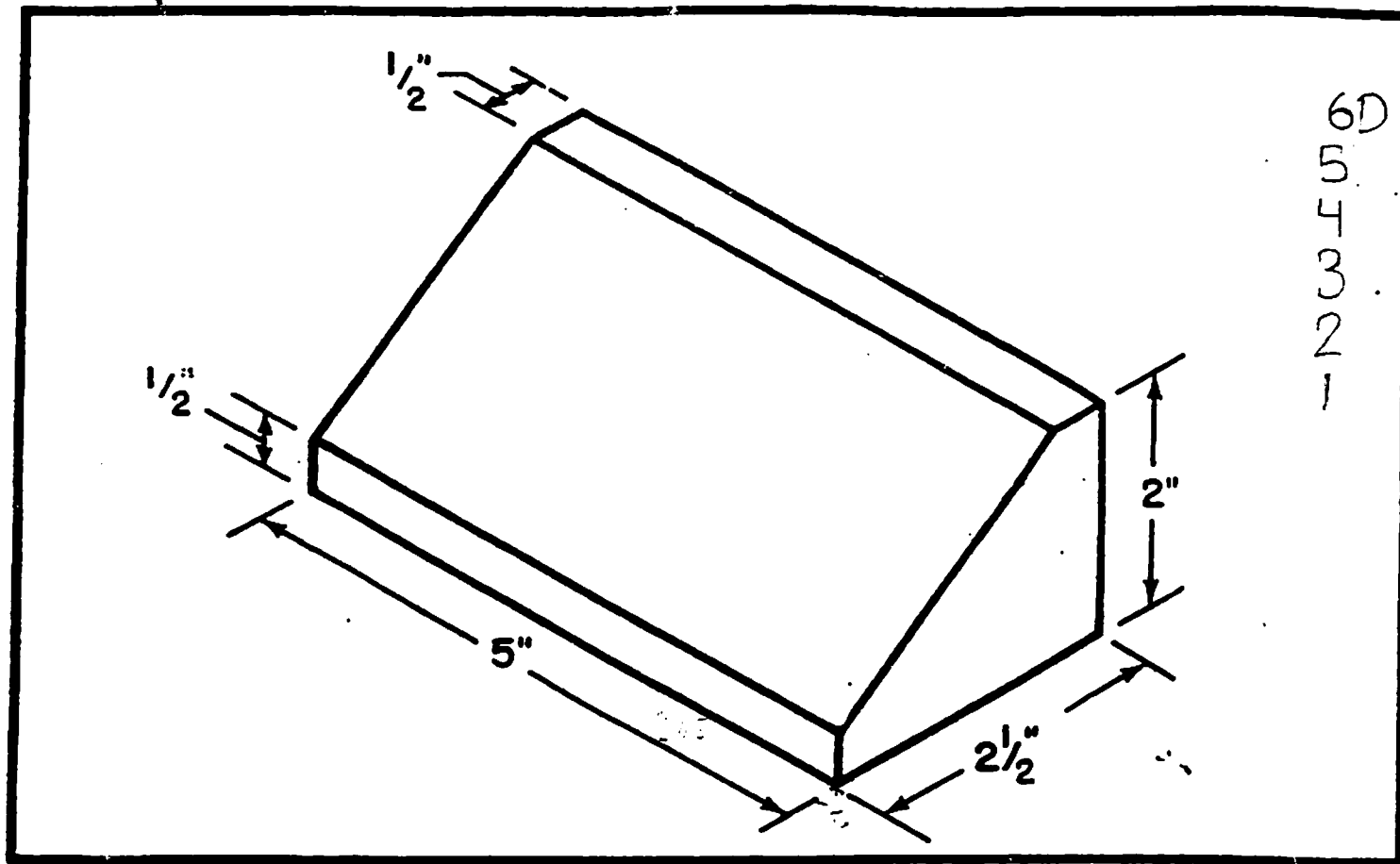


**Chamfered Block.**  
DRAWING # 3



U Block

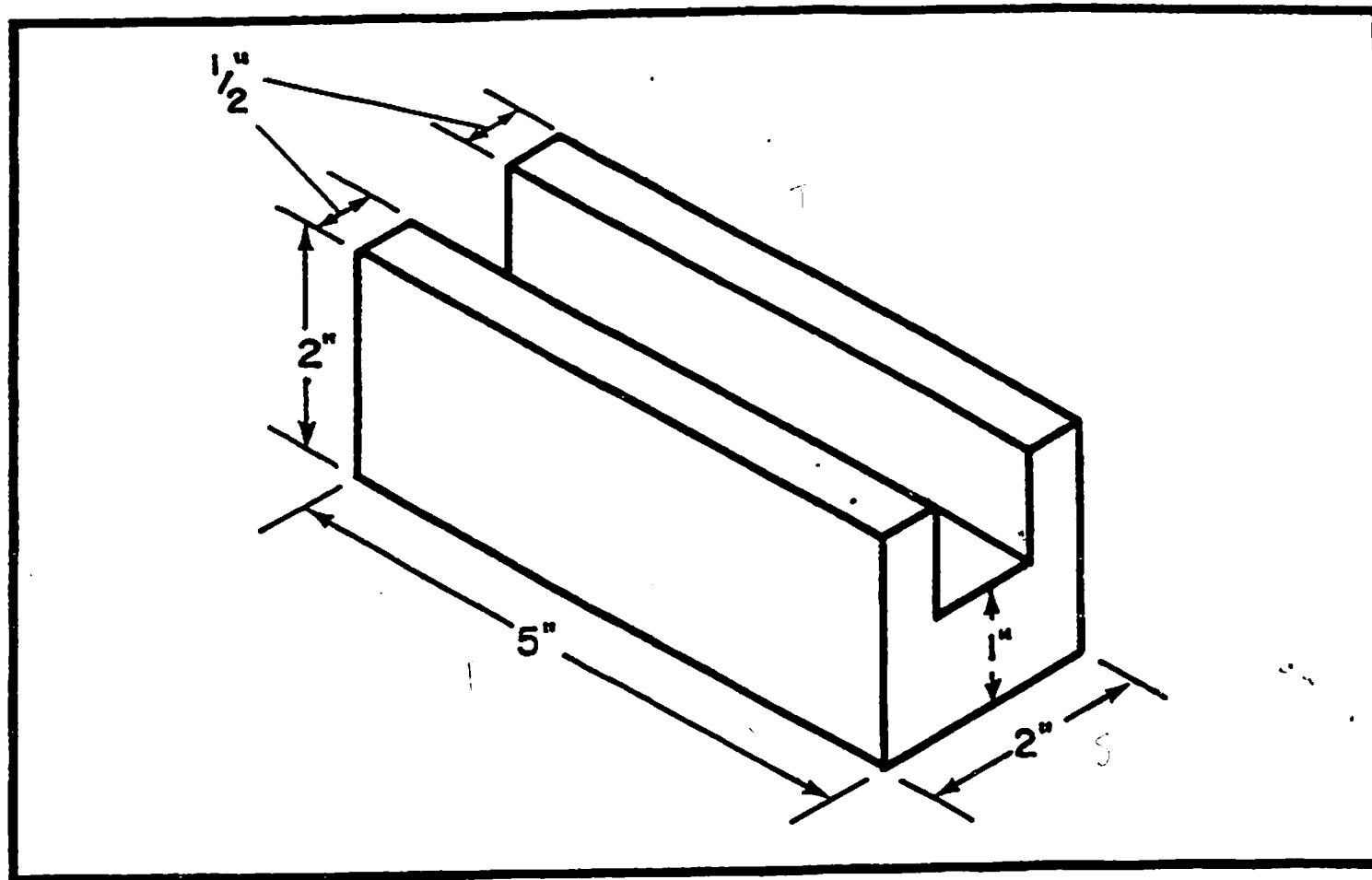
DRAWING # 4



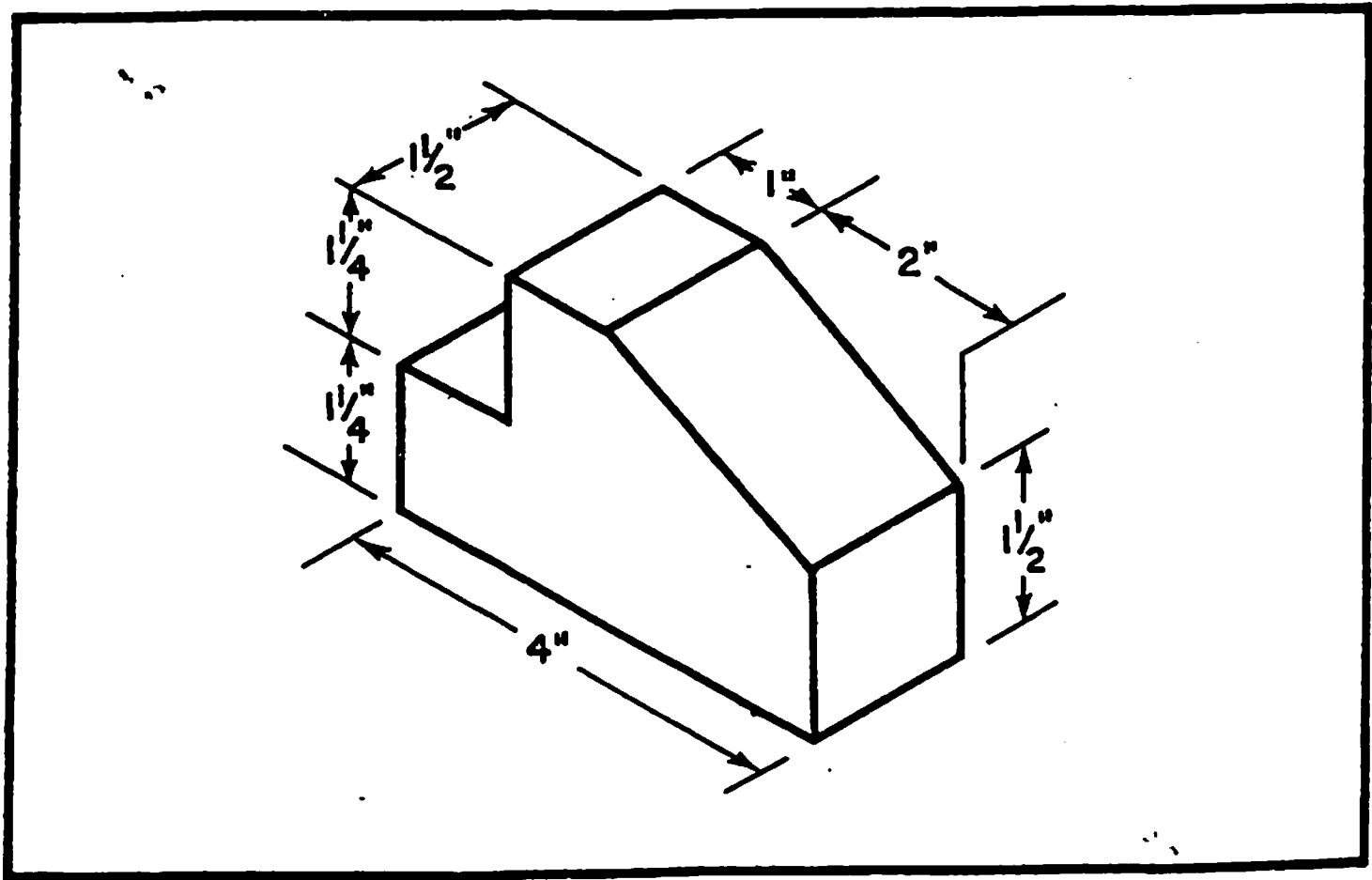
**Chamfered Block**

DRAWING # 5

DRAWING # 6



Dado Block

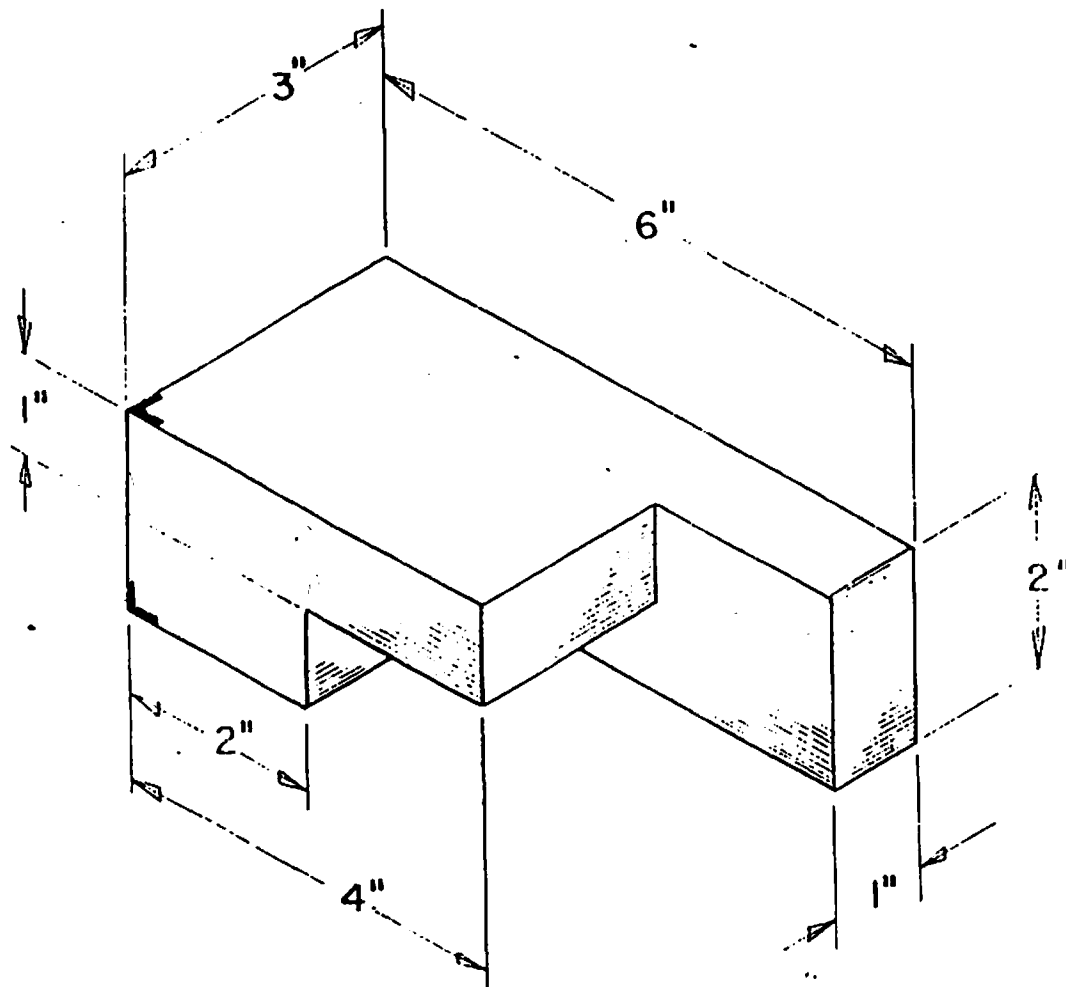


Chamfered Rabbeted

DRAWING # 7

DRAWING # 8

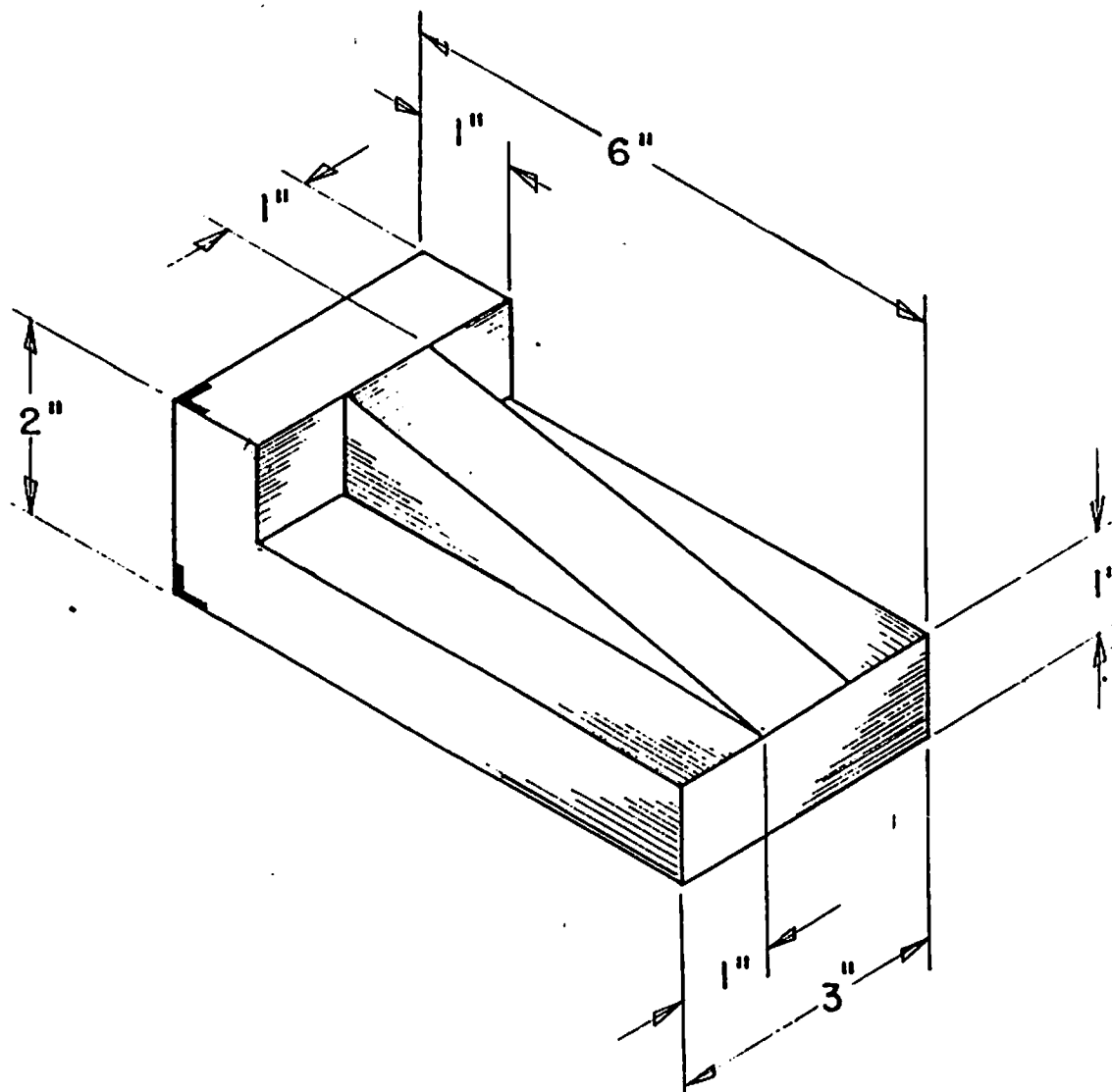
USE 12 x 18 SIZE PAPER



NAME - NOTCHED SHELF •



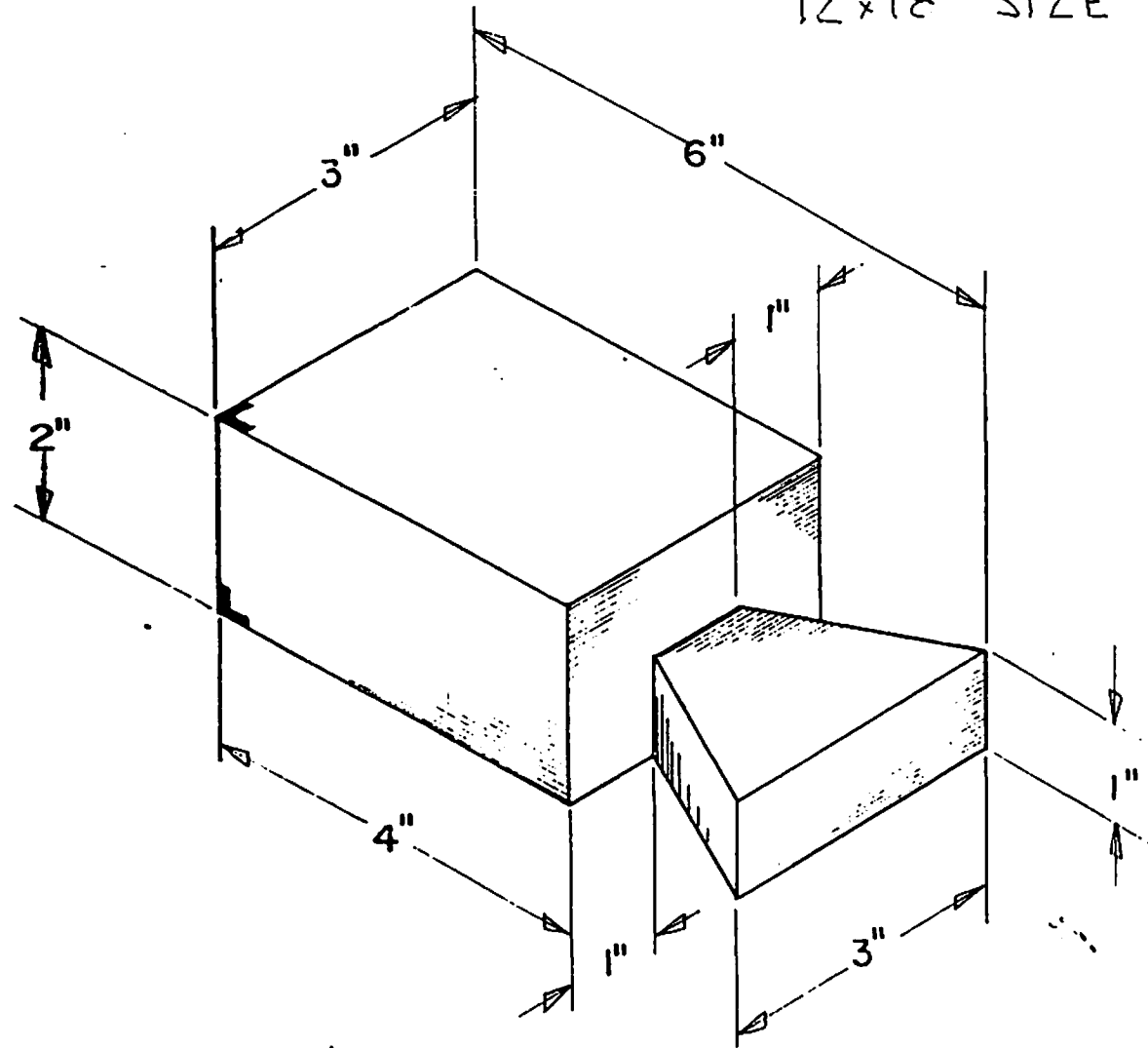
DRAWING # 9 USE 12 x 18 PAPER



ANGLE BLOCK

DRAWING # 10  
12x18 SIZE PAPER

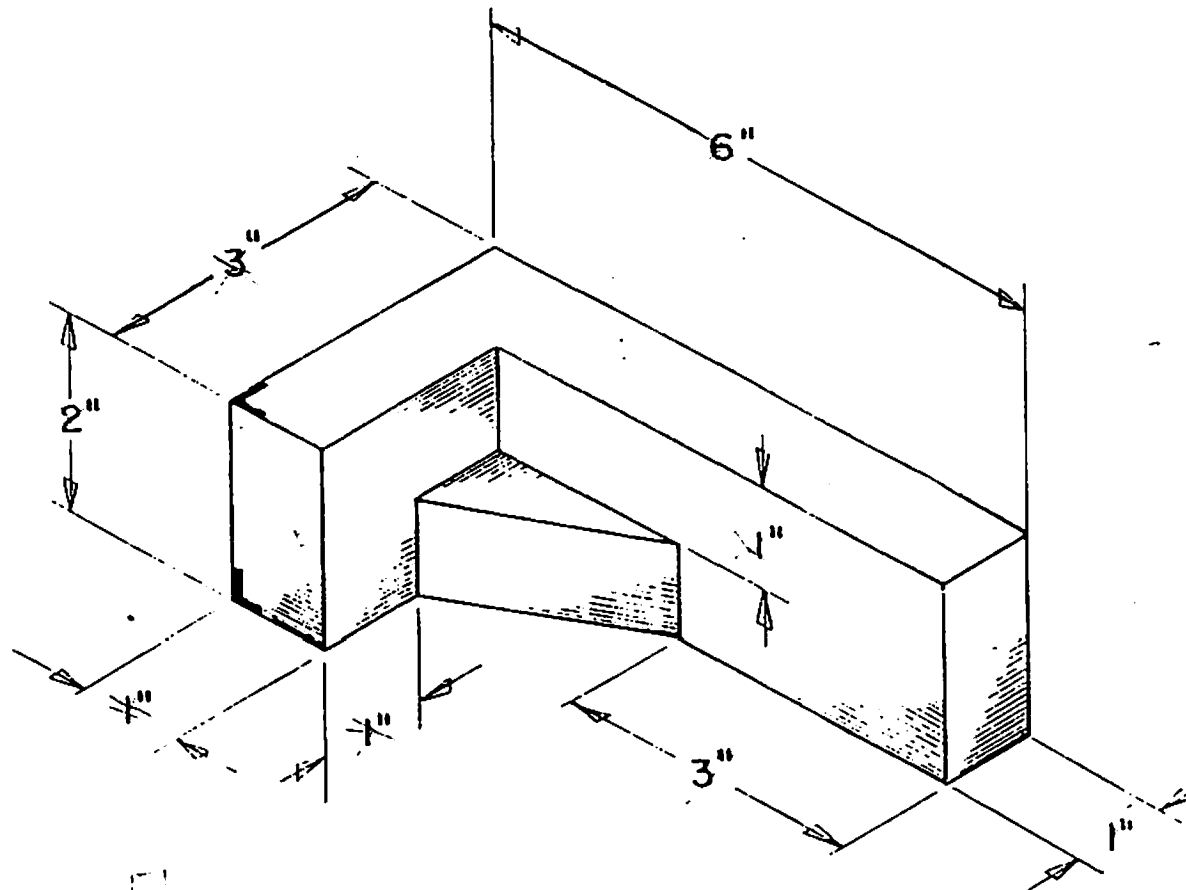
15  
MILYSSA/NEED



LAP DOVETAIL

DRAWING # 11

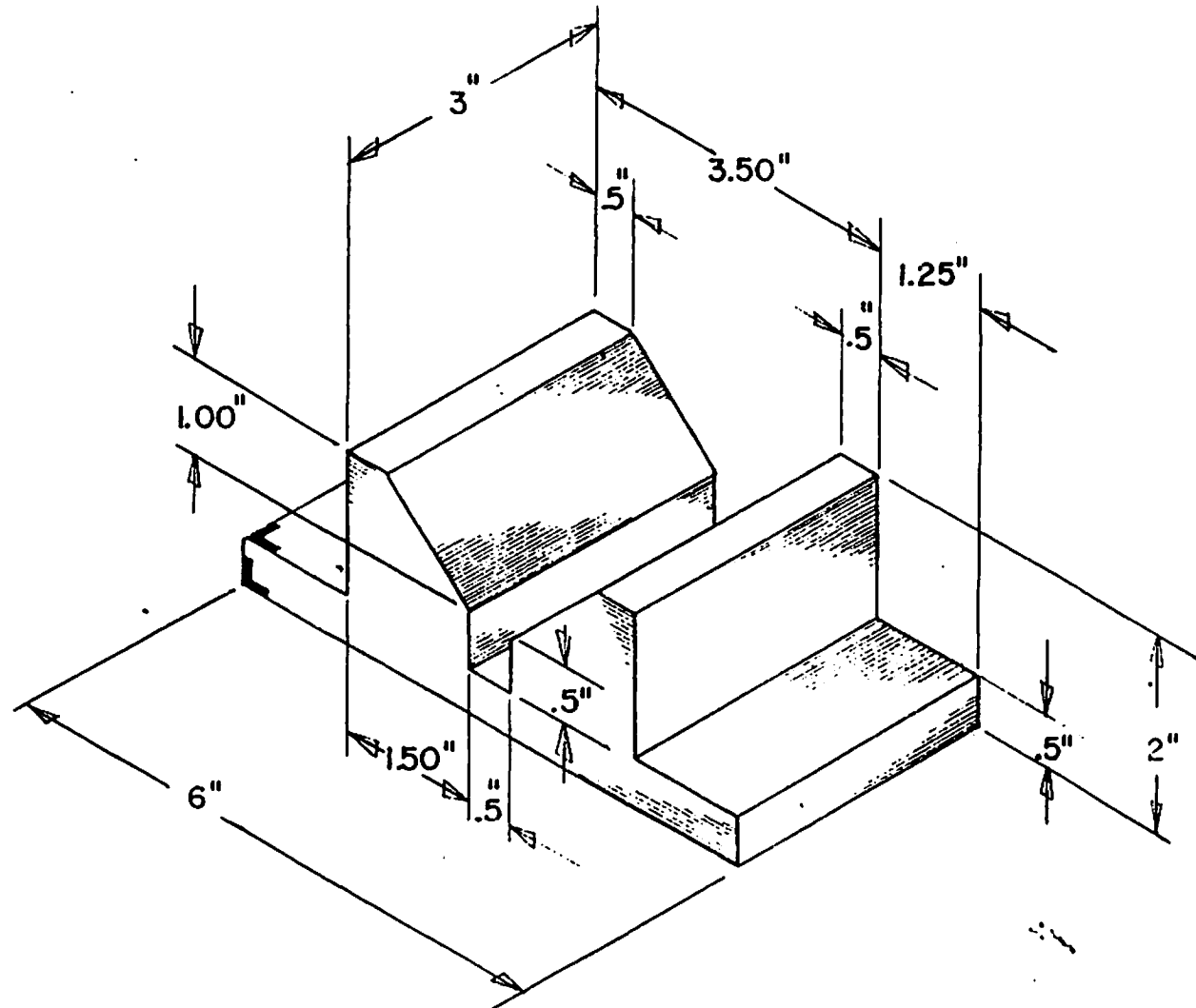
USE 12 x 18 PAPER



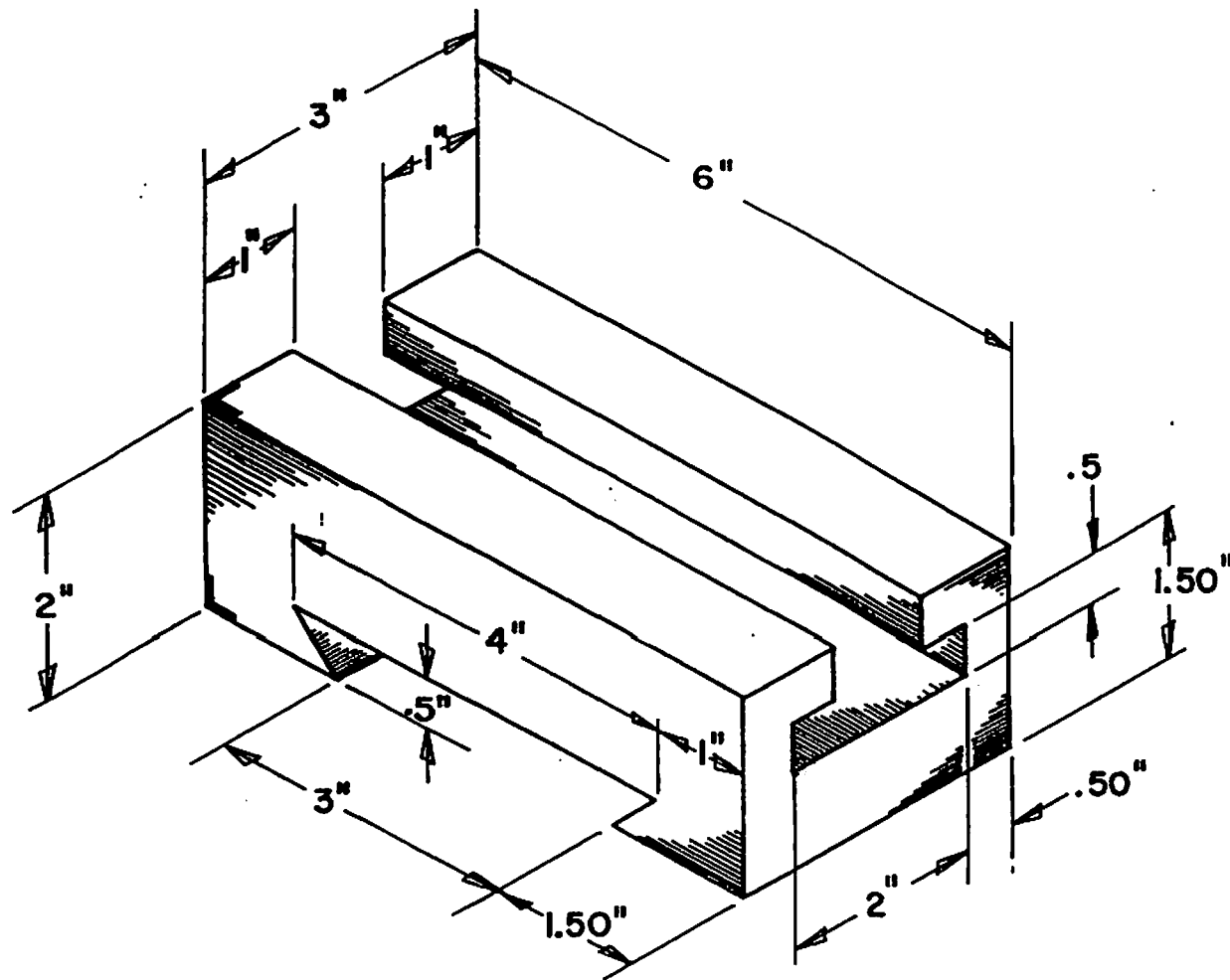
BRACKET

DRAWING # 12

USE 12 x 18 PAPER



MACHINIST BLOCK

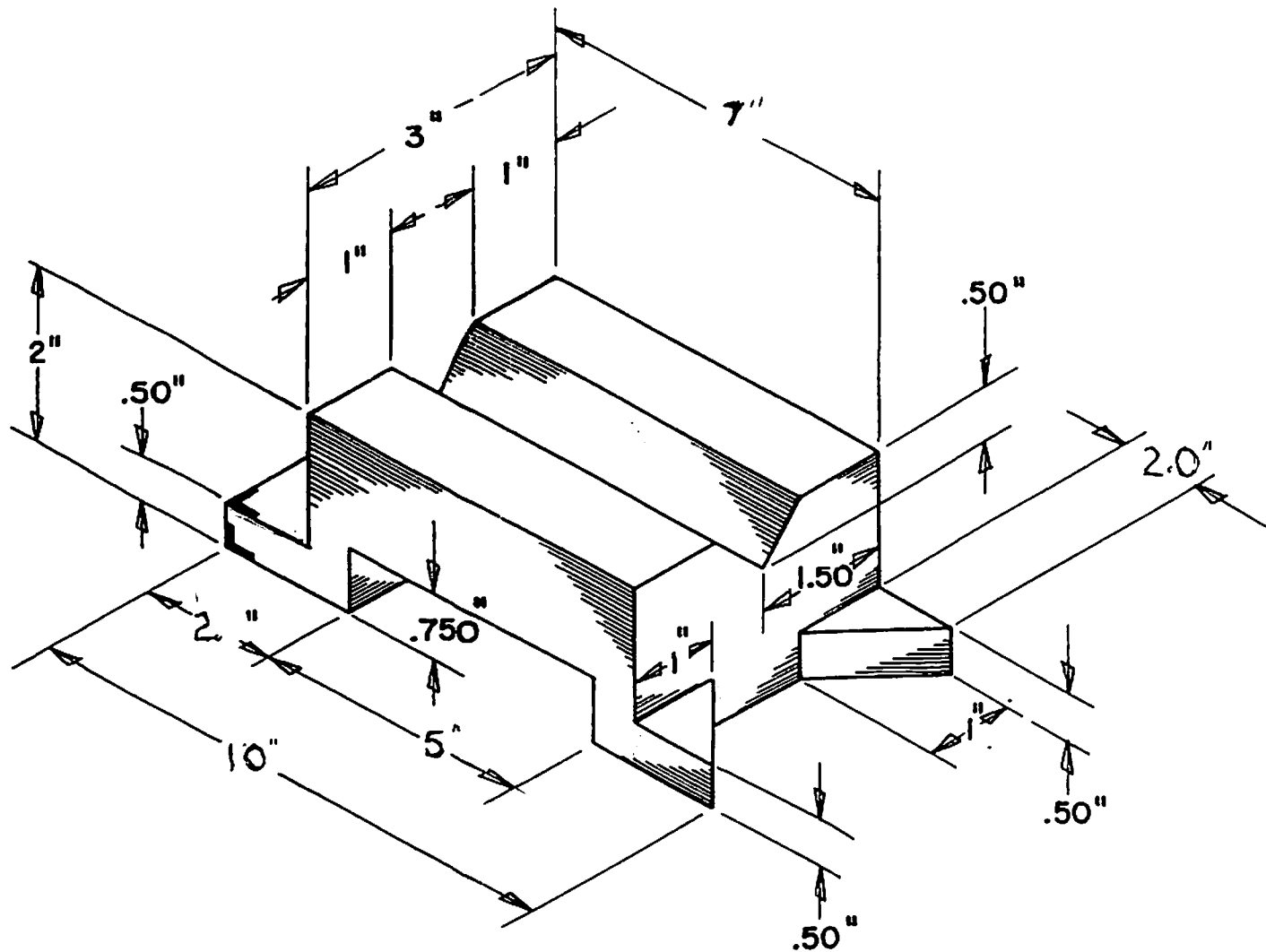


DRAWING # 13

USE 12x18 PAPER

"T" SLOT SLIDE



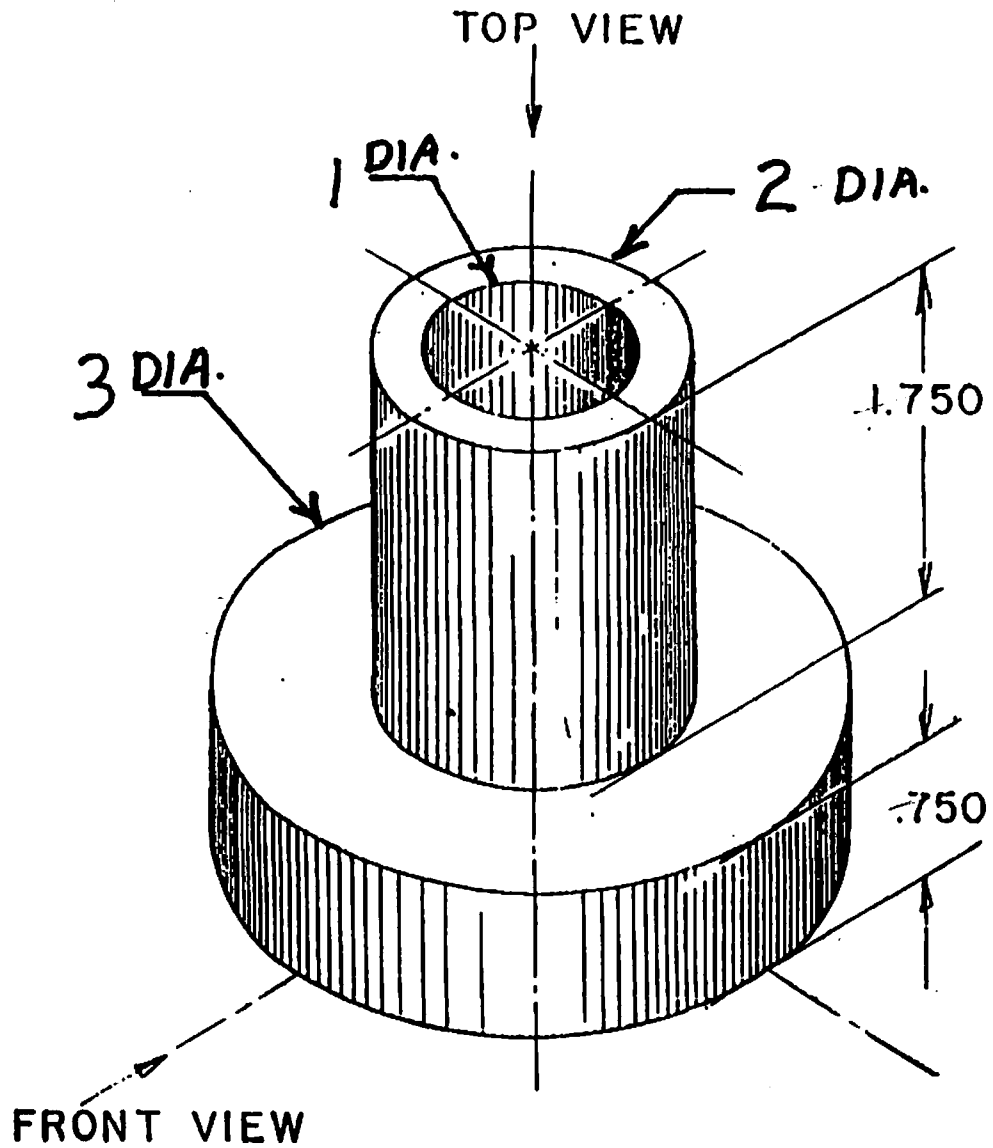


DRAWING # 14

MACHINIST BLOCK

DRAW  $\frac{1}{2}$  SCALE USING 12x18 PAPER

USING A 9x12 PAPER DRAW A FRONT (RECTANGULAR) AND TOP (CIRCULAR) views



FLANGED BUSHING

DRAWING # 15

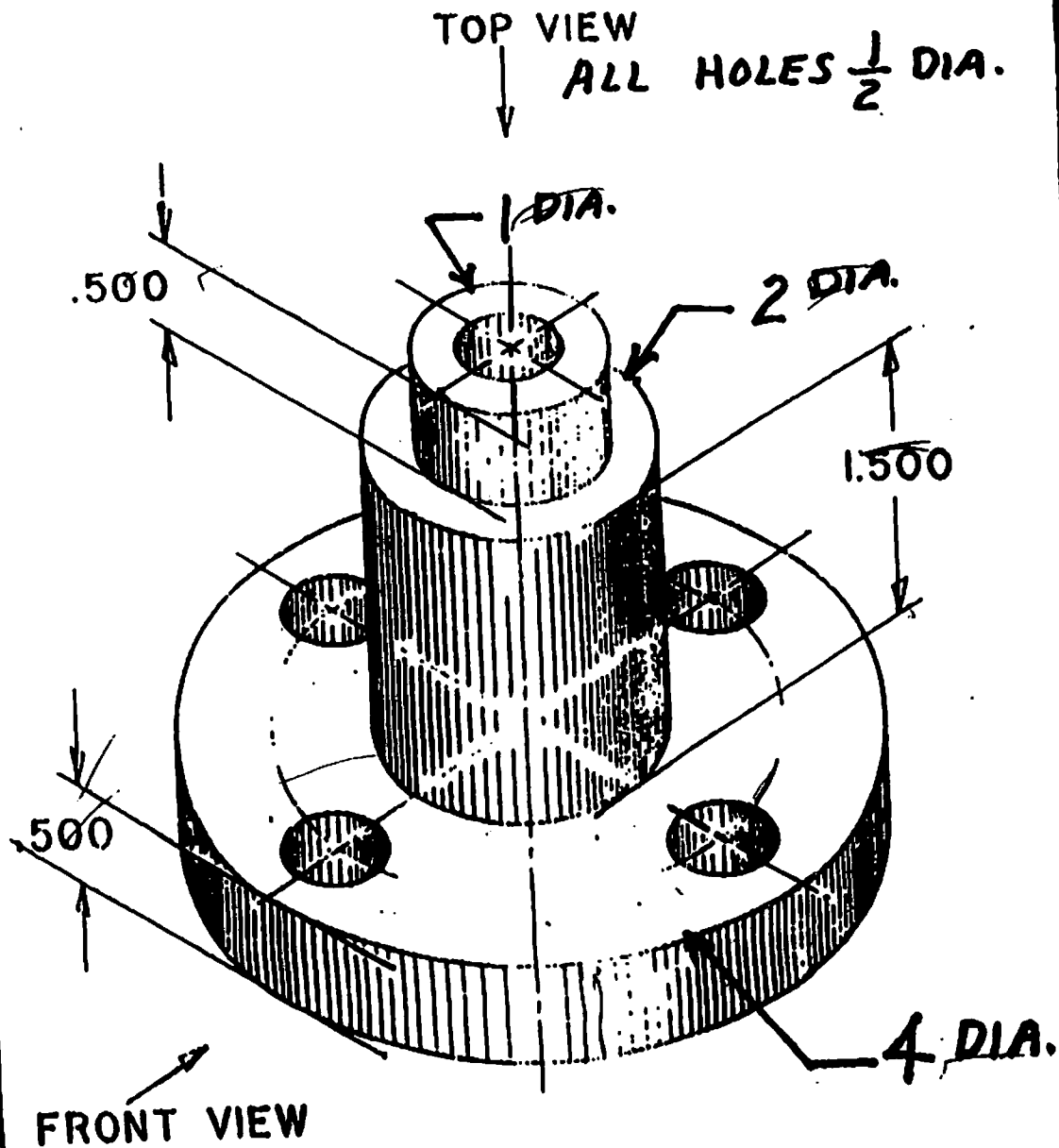






Note Doudora

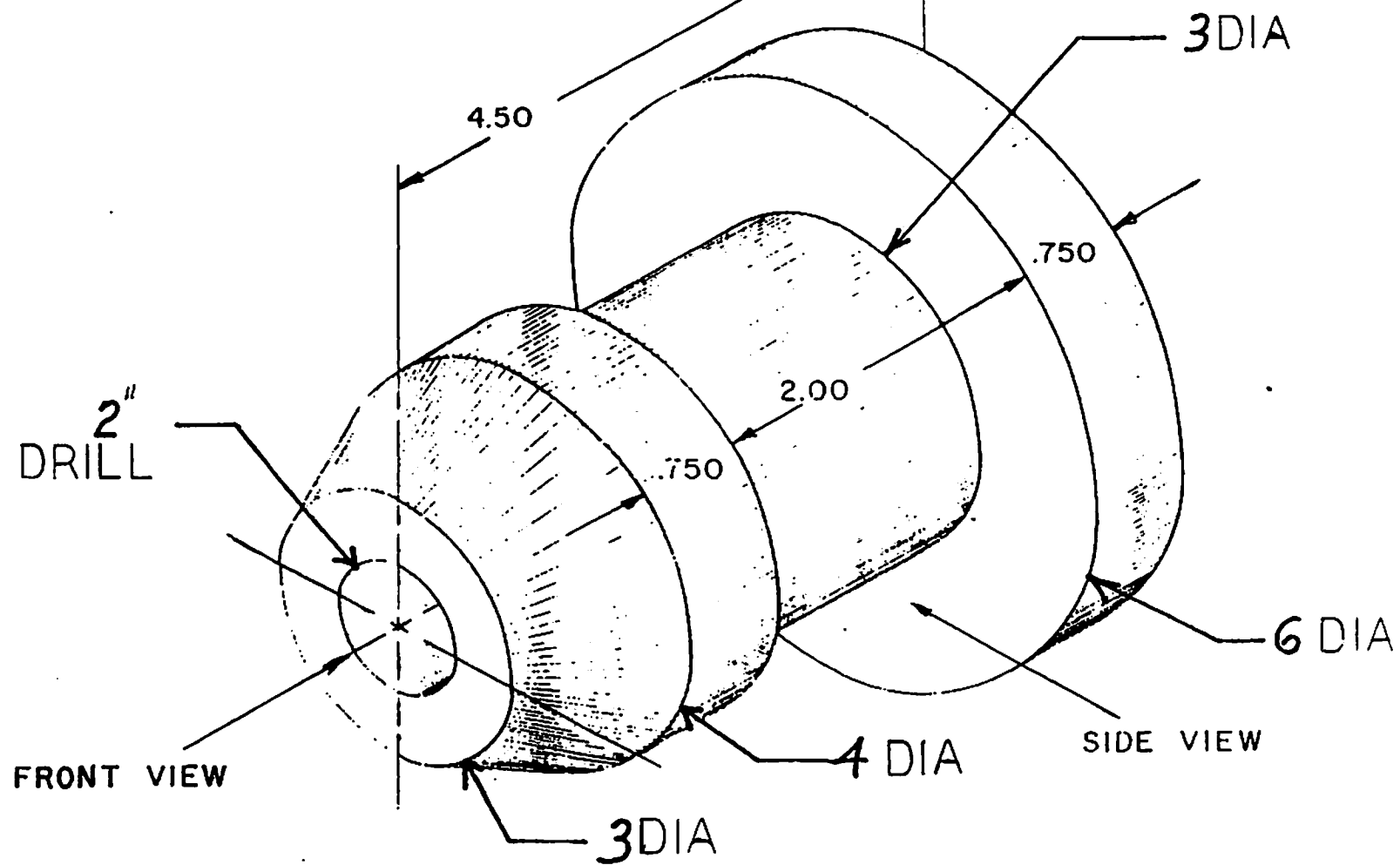
USE A 12x18 PAPER - CREATE TOP, FRONT AND SECTIONED VIEWS



SHAFT SUPPORT

DRAWING # 18

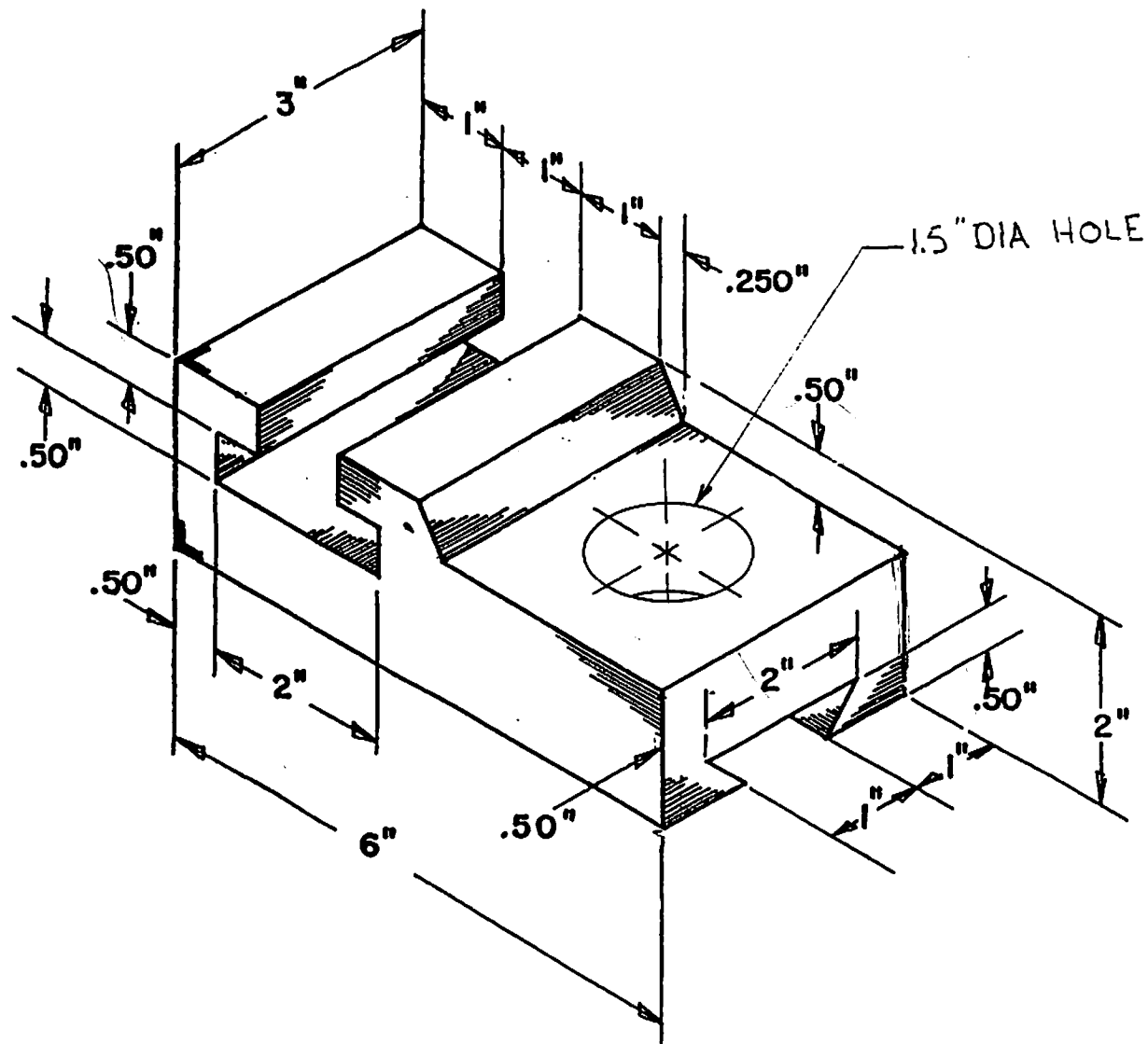
6 54 222



PROBLEM NO. 19

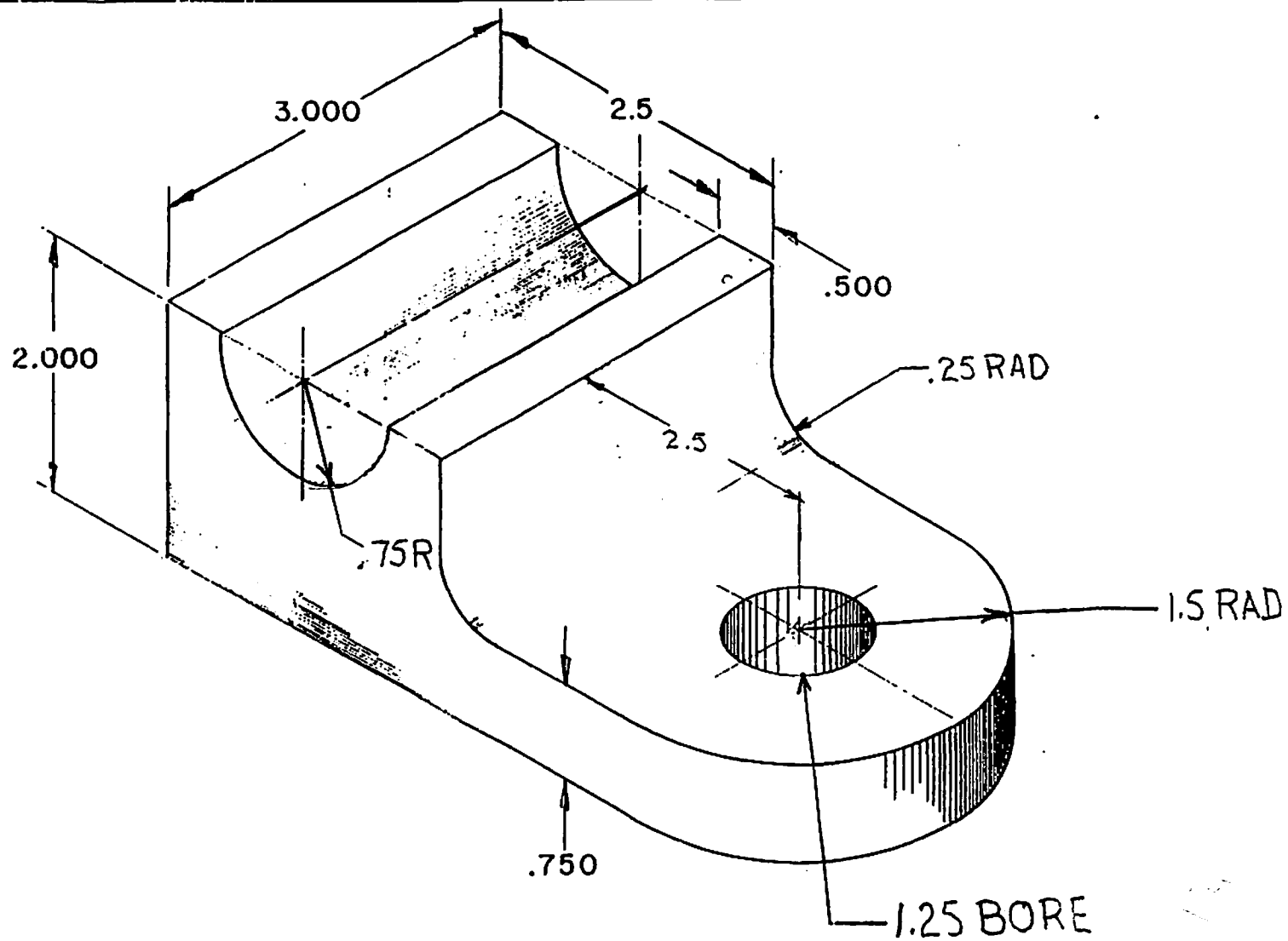
NAME-CONE SUPPORT

DRAW FRONT & TOP VIEWS



**PROBLEM NO. 20**

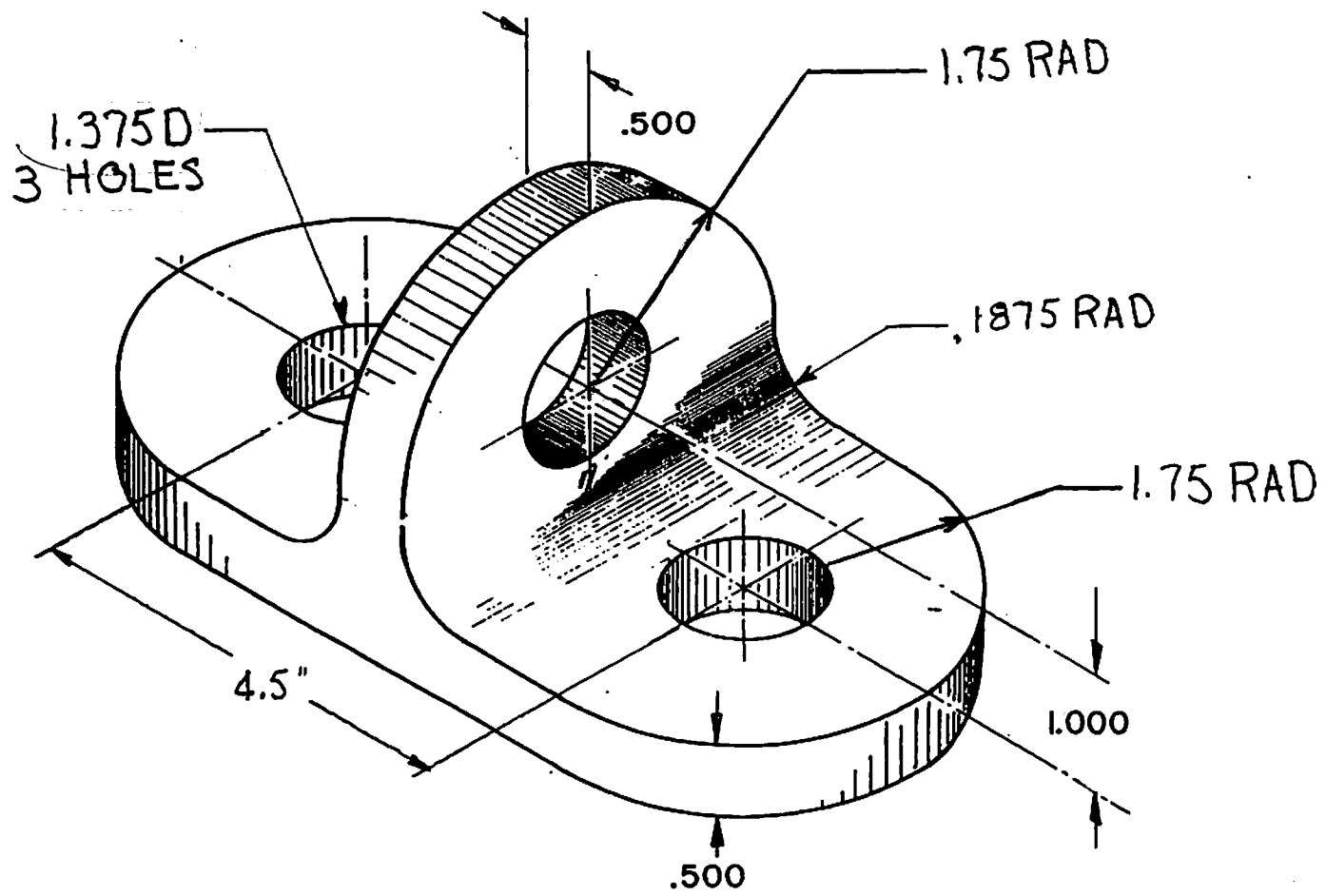
**NAME-DOVETAIL "T" SLOT SLIDE**



PROBLEM NO. 21

NAME-SHAFT SUPPORT

USE 12x18 PAPER FULL SCALE



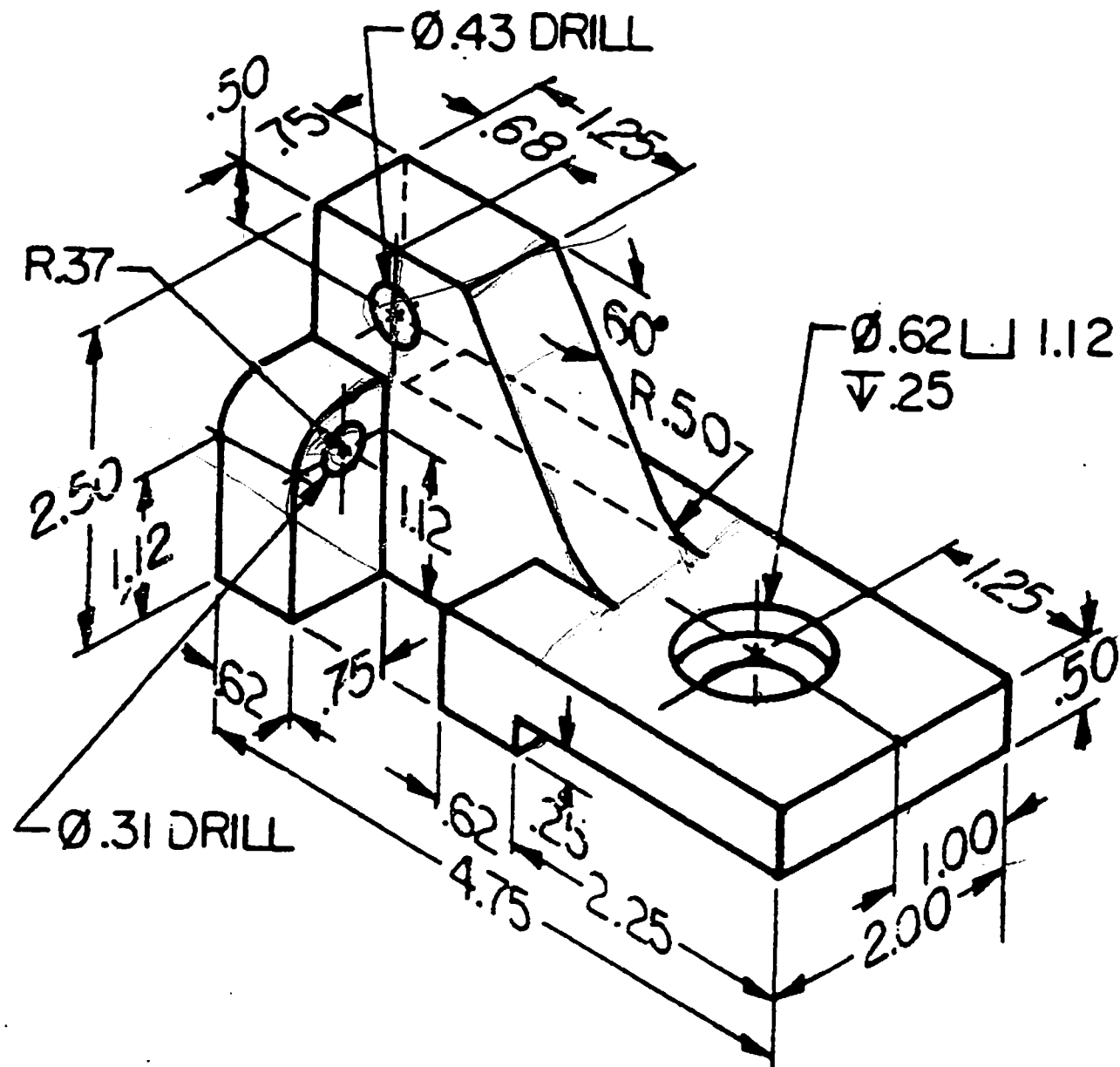
PROBLEM NO. 22

NAME-BRACKET

USE 12 x 18 PAPER

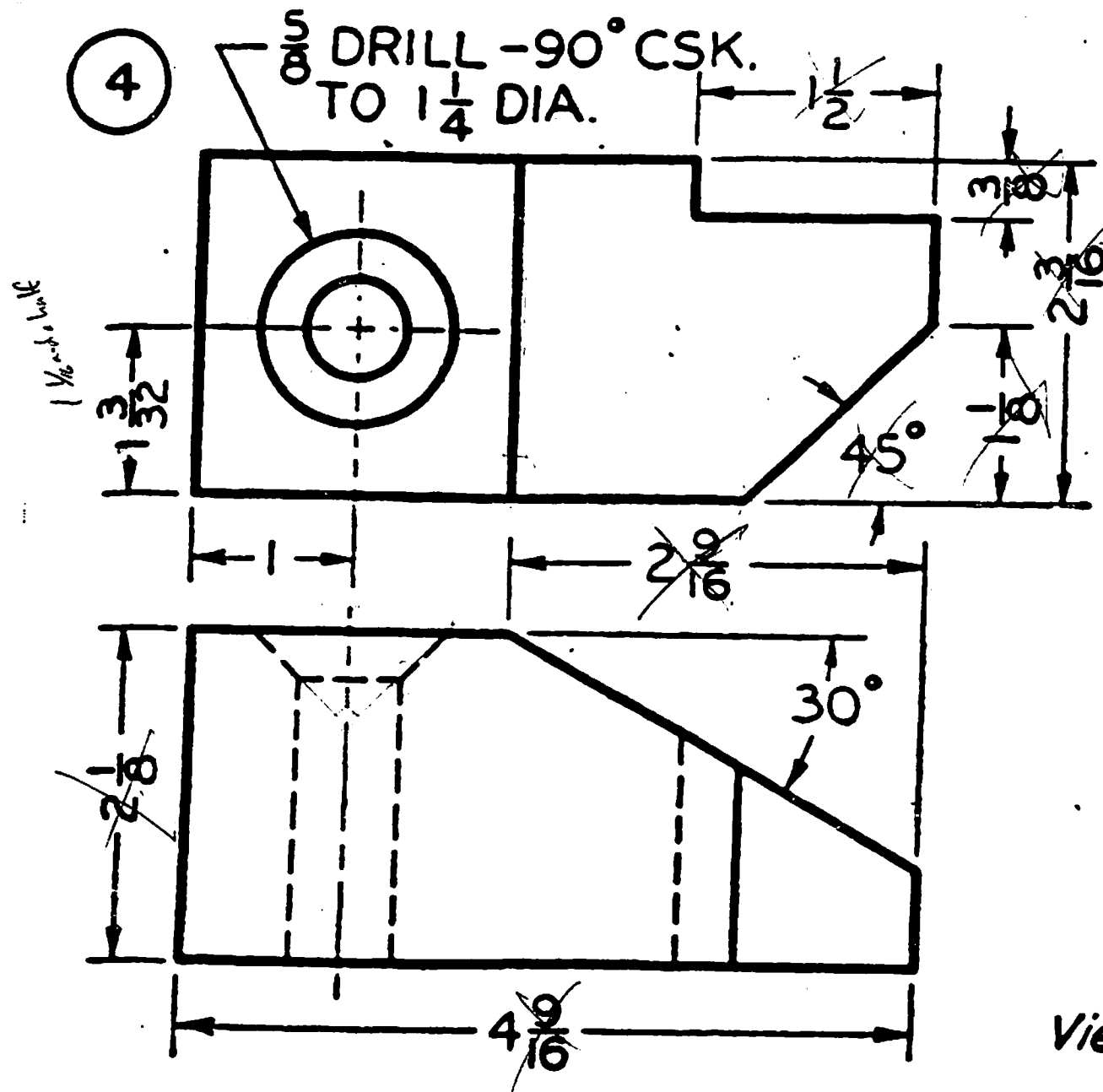
FULL SIZE w/ ENGINEERS SCALE

1  
85  
85  
150



NO 23 **Roller test bracket.**

USE 12 X 18 PAPER



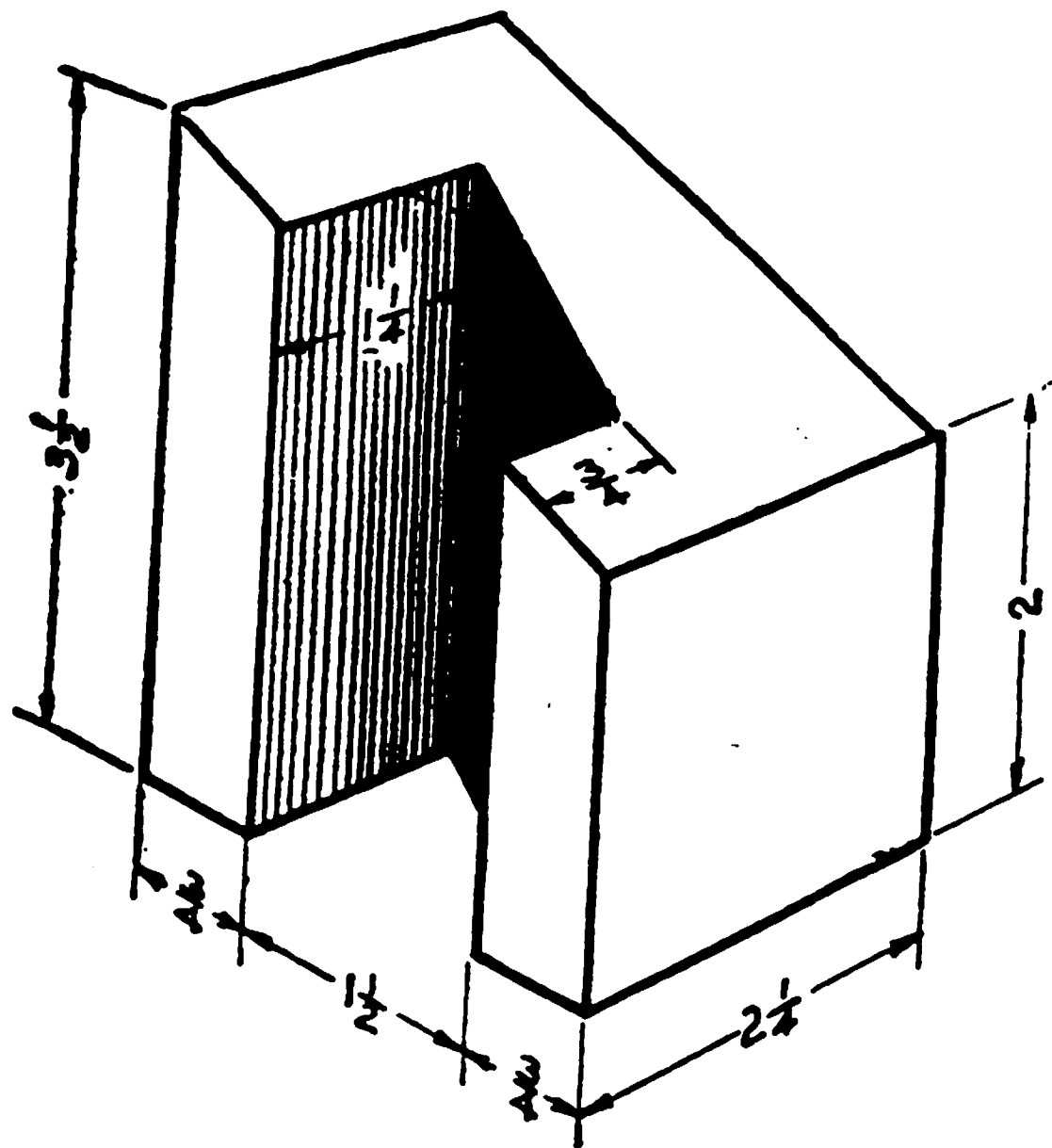
ANGLE  
BLOCK

View here

DWG NO. 24 AUXILIARY - VIEW

12 X 18 PAPER





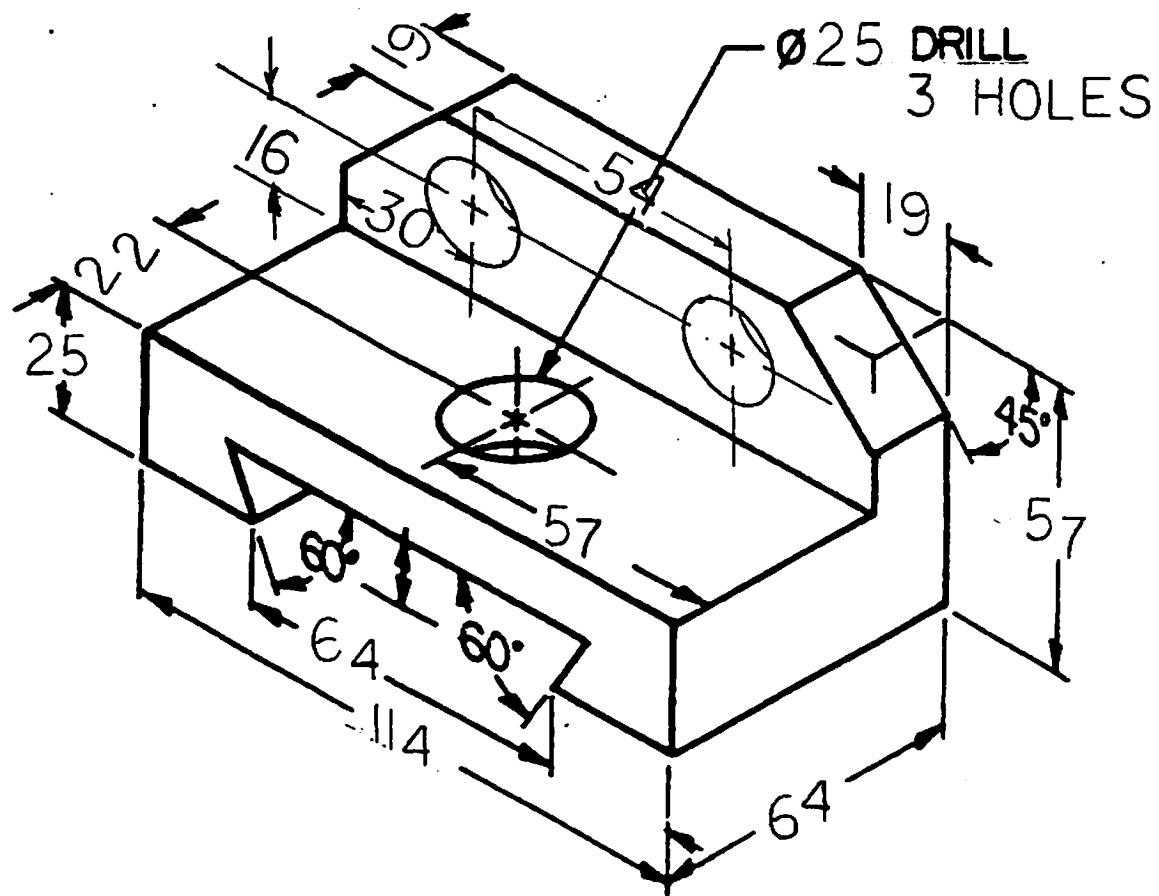
LOCK BLOCK

**Problem 25**

DRAW FRONT, TOP, SIDE, & AUXILLARY VIEWS  
12 X 18 PAPER

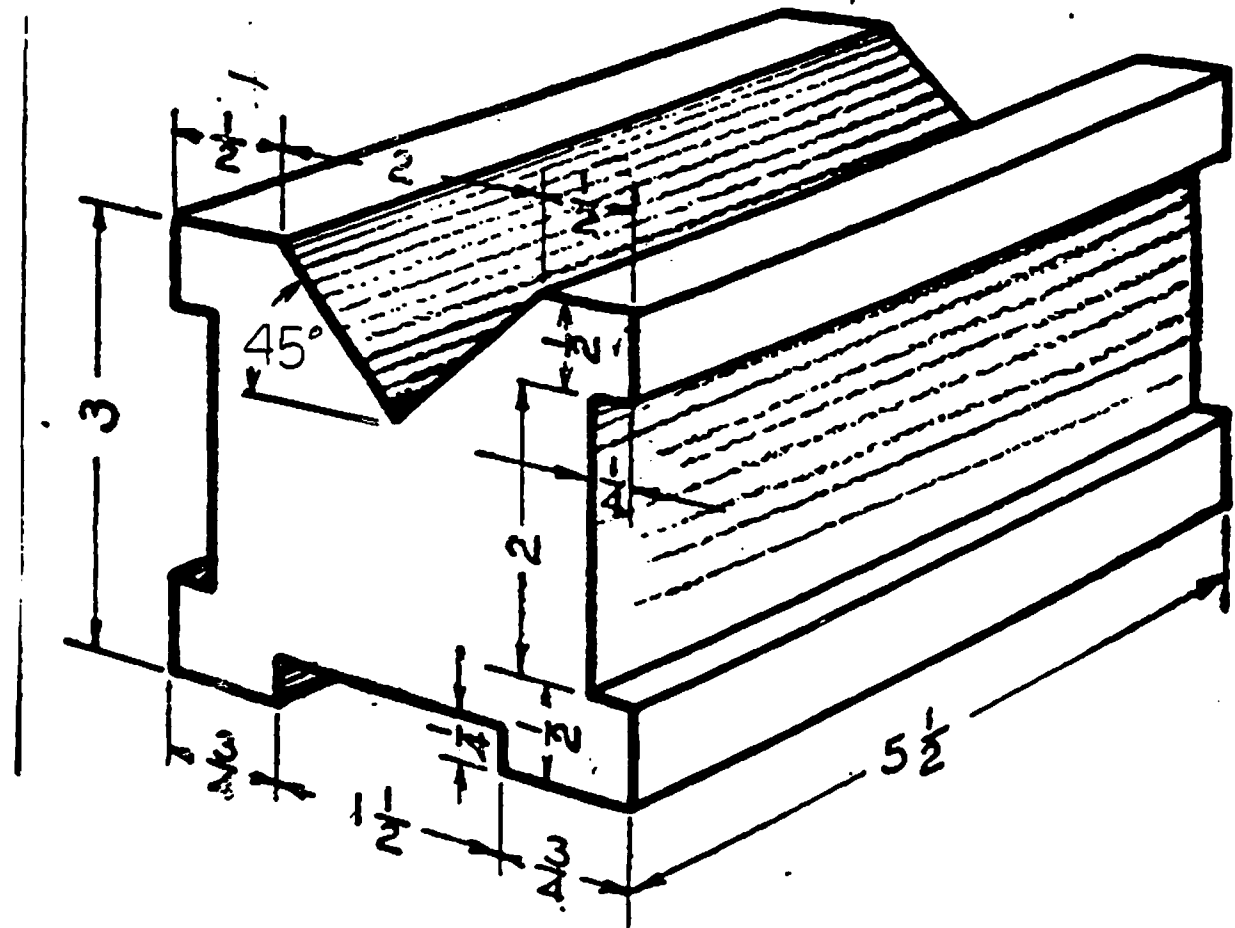
METRIC      MILLIMETERS





**Dovetail slide.** DRAWING NO 27  
METRIC — MILLIMETERS

DRAWING NC 28 - ISOMETRIC  
DRAW 3 VIEWS + ISOMETRIC



V-BLOCK

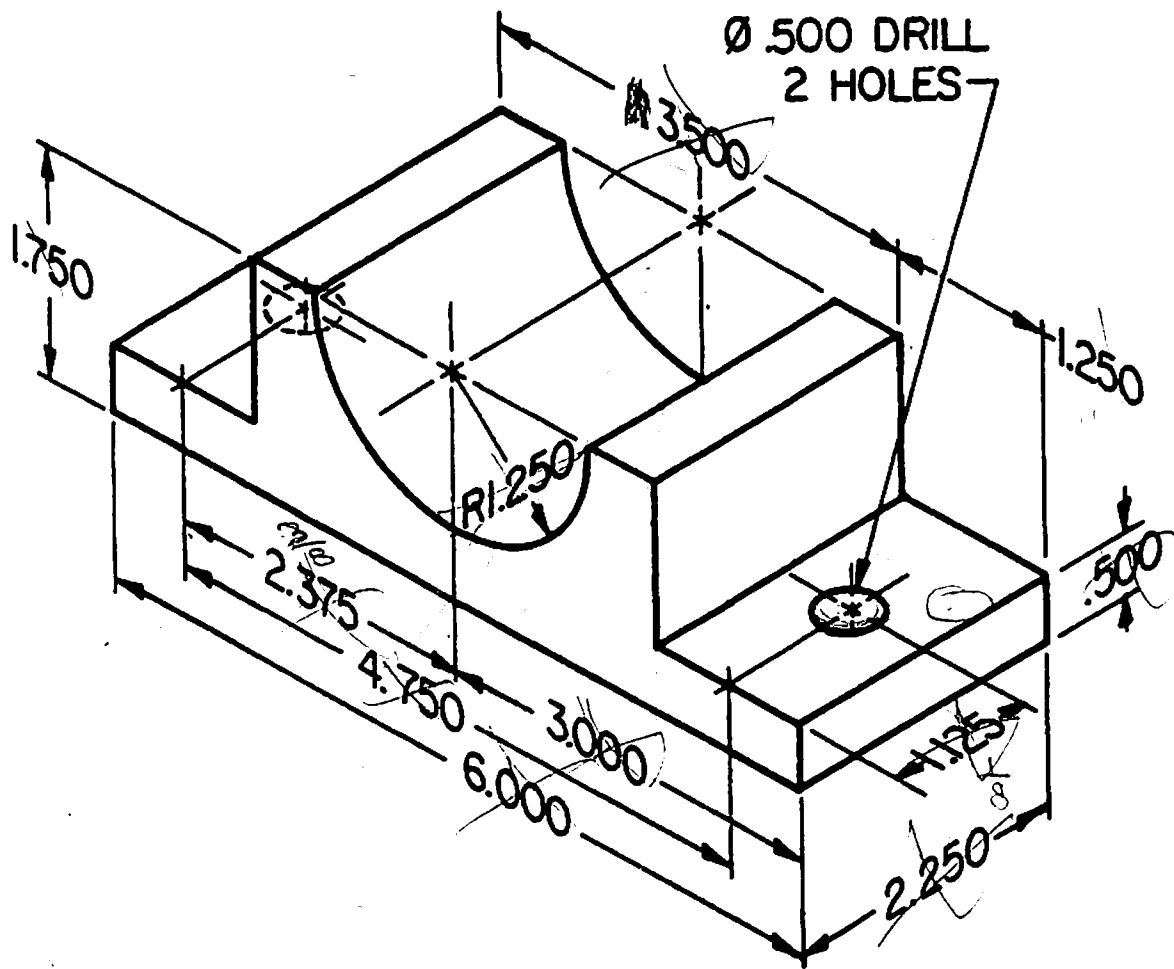
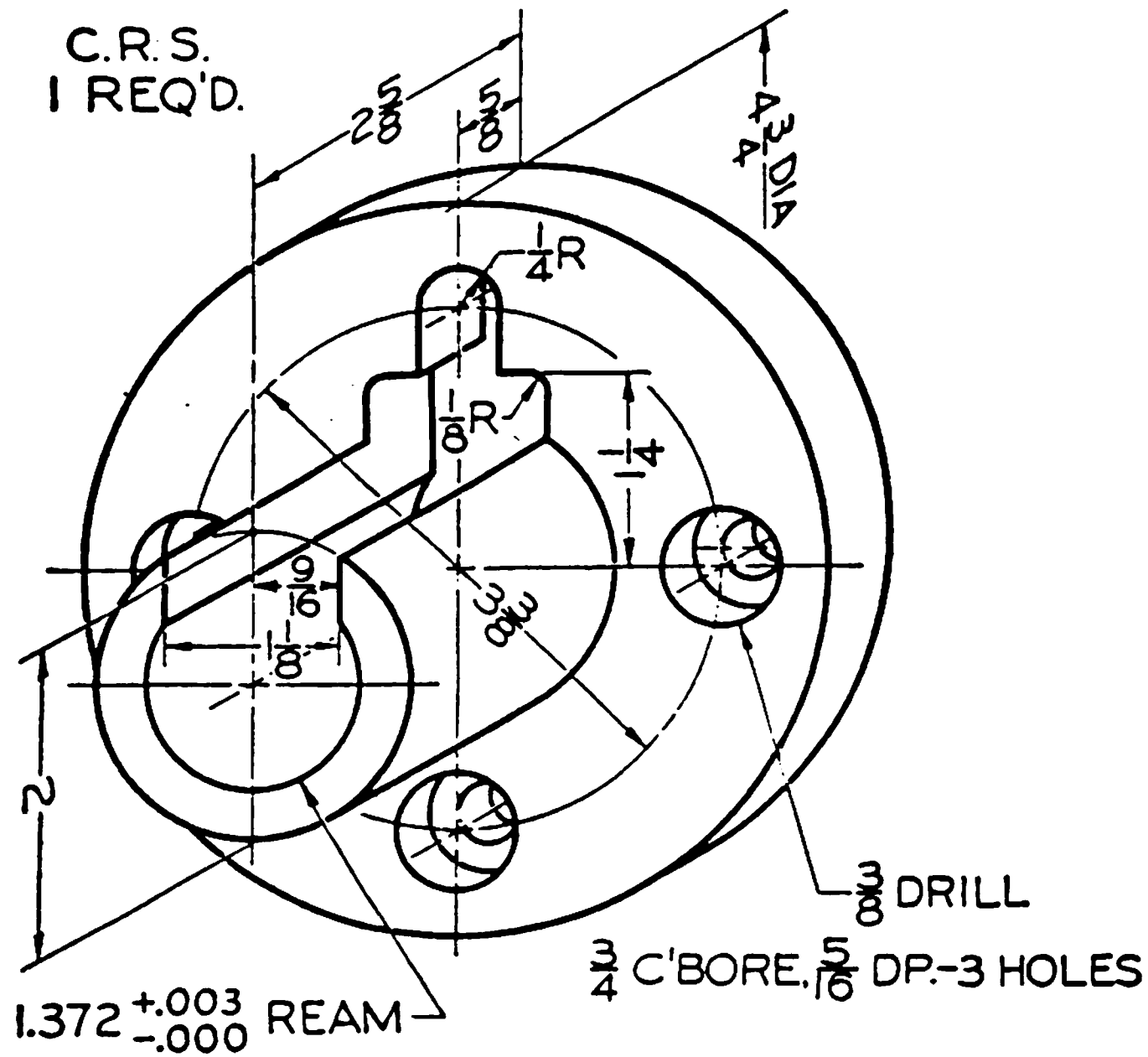


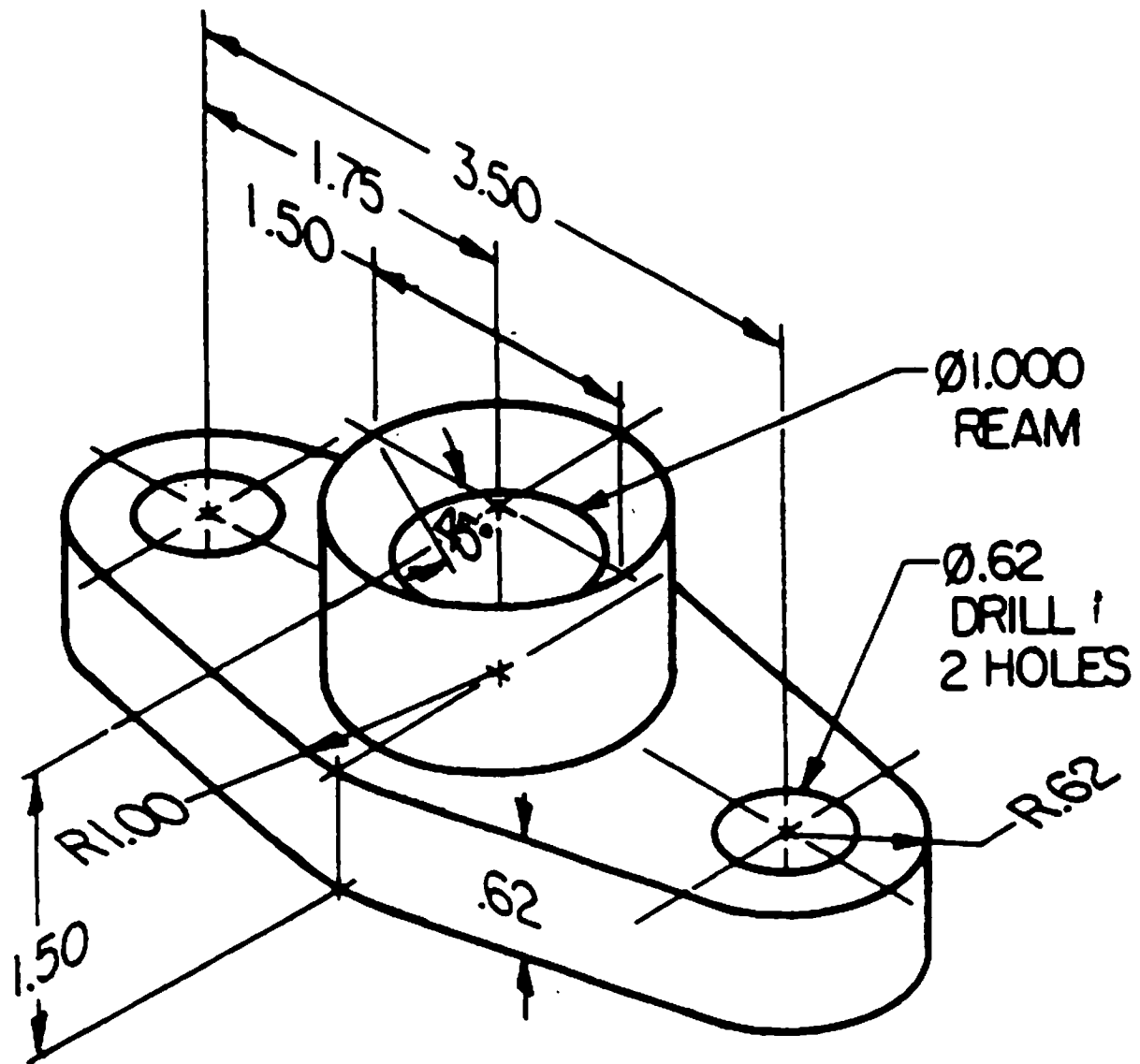
Fig. 8-56. Trunion block. Using Layout C in the Appendix, draw necessary views with instruments. Omit dimensions unless assigned.

H29

• 625



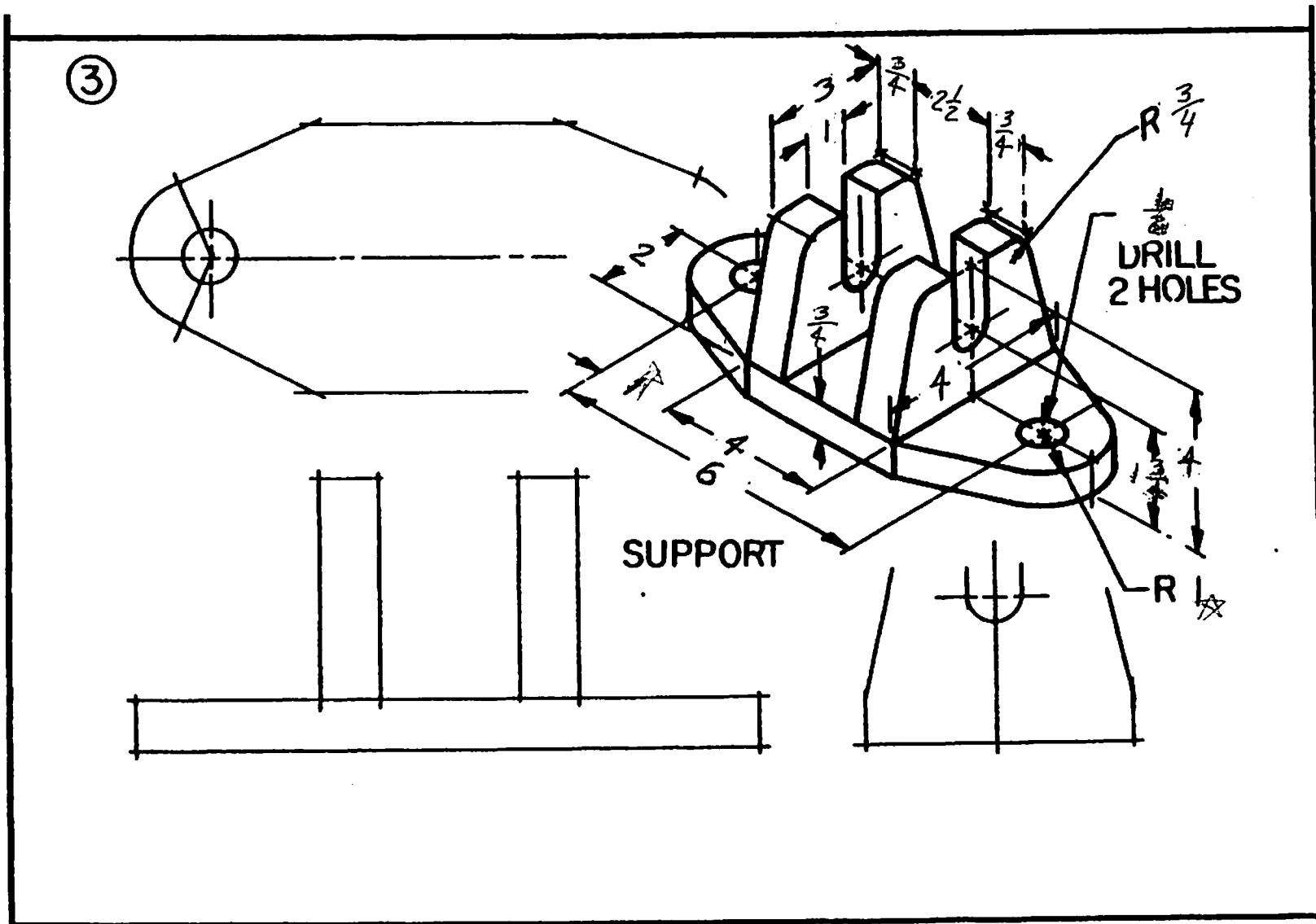
DRAWING NO 30      **Centering Bushing**  
 ISOMETRIC CIRCLES  
 12 X 18 PAPER



DRAWING NO 31      **Packing gland**  
 ISOMETRIC      DECIMALS







# 32 Fig. 8-55. Working drawing problems. Using Layout C in the Appendix, strip. Omit dimensions unless assigned.



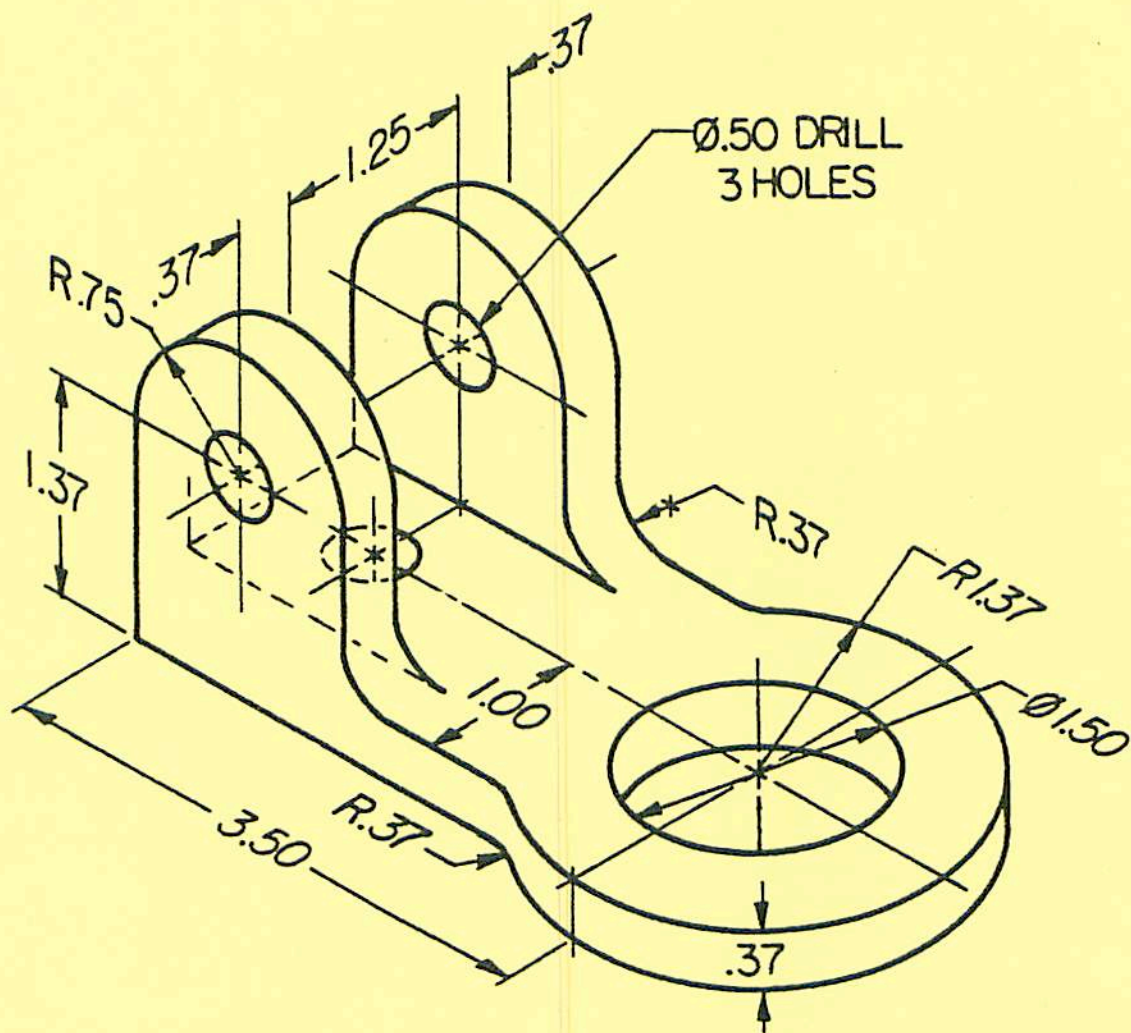


Fig. 8-65. Actuator base. Using Layout C in the Appendix, draw necessary views with instruments.

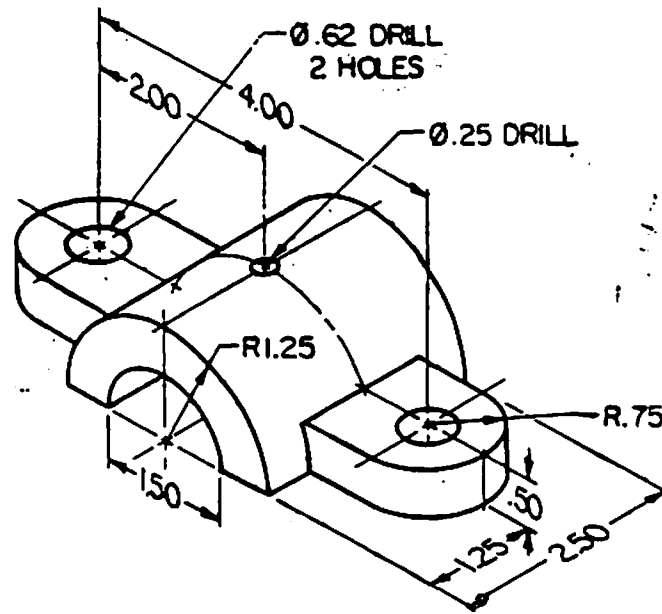
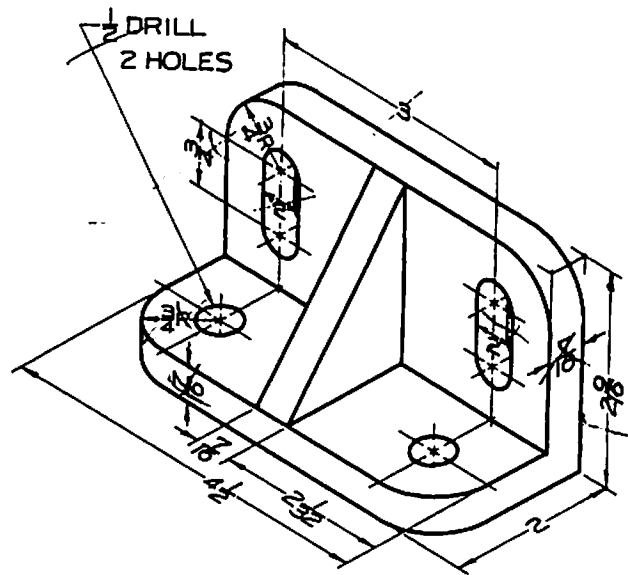


Fig. 8-66. Bearing cap. Using Layout C in the Appendix, draw necessary views with instruments. Omit dimensions unless assigned.



**Fig. 8-62. Base bracket. Using Layout C in the Appendix, draw necessary views with instruments. Omit dimensions unless assigned.**